

FILED
01-12-2024
CLERK OF WISCONSIN
SUPREME COURT

IN THE SUPREME COURT OF WISCONSIN

No. 2023AP1399-OA

REBECCA CLARKE, RUBEN ANTHONY, TERRY DAWSON, DANA GLASSTEIN,
 ANN GROVES-LLOYD, CARL HUJET, JERRY IVERSON, TIA JOHNSON, ANGIE KIRST,
 SELIKA LAWTON, FABIAN MALDONADO, ANNEMARIE MCCLELLAN, JAMES MCNETT,
 BRITTANY MURIELLO, ELA JOOSTEN (PARI) SCHILS, NATHANIEL SLACK,
 MARY SMITH-JOHNSON, DENISE (DEE) SWEET, AND GABRIELLE YOUNG,

Petitioners,

GOVERNOR TONY EVERS, IN HIS OFFICIAL CAPACITY;
 NATHAN ATKINSON, STEPHEN JOSEPH WRIGHT, GARY KRENZ, SARAH J. HAMILTON,
 JEAN-LUC THIFFEAULT, SOMESH JHA, JOANNE KANE, AND LEAH DUDLEY,

Intervenors-Petitioners,

v.

WISCONSIN ELECTIONS COMMISSION, DON MILLIS, ROBERT F. SPINDELL, JR.,
 MARK L. THOMSEN, ANN S. JACOBS, MARGE BOSTELMANN, AND CARRIE RIEPL, IN THEIR
 OFFICIAL CAPACITIES AS MEMBERS OF THE WISCONSIN ELECTIONS COMMISSION,
 MEAGAN WOLFE, IN HER OFFICIAL CAPACITY AS THE ADMINISTRATOR OF THE
 WISCONSIN ELECTIONS COMMISSION; ANDRÉ JACQUE, TIM CARPENTER, ROB HUTTON,
 CHRIS LARSON, DEVIN LEMAHIEU, STEPHEN L. NASS, JOHN JAGLER, MARK SPREITZER,
 HOWARD L. MARKLEIN, RACHAEL CABRAL-GUEVARA, VAN H. WANGGAARD,
 JESSE L. JAMES, ROMAINE ROBERT QUINN, DIANNE H. HESSELBEIN, CORY TOMCZYK,
 JEFF SMITH, AND CHRIS KAPENGA, IN THEIR OFFICIAL CAPACITIES AS MEMBERS OF THE
 WISCONSIN SENATE,

Respondents,

WISCONSIN LEGISLATURE;

BILLIE JOHNSON, CHRIS GOEBEL, ED PERKINS, ERIC O'KEEFE, JOE SANFELIPPO,
 TERRY MOULTON, ROBERT JENSEN, RON ZAHN, RUTH ELMER, AND RUTH STRECK,

Intervenors-Respondents.

WRIGHT PETITIONERS' SUPPORTING MATERIALS: THE WRIGHT MAP

Sarah A. Zylstra (Bar No. 1033159)
 Tanner G. Jean-Louis (Bar No. 1122401)
 Boardman Clark LLP
 1 South Pinckney Street, Suite 410
 Madison, WI 53701
 (608) 257-9521
 szylstra@boardmanclark.com
 tjeanlouis@boardmanclark.com

Sam Hirsch*
 Jessica Ring Amunson*
 Elizabeth B. Deutsch*
 Arjun R. Ramamurti*
 Jenner & Block LLP
 1099 New York Avenue NW, Suite 900
 Washington, DC 20001
 (202) 639-6000
 shirsch@jenner.com
 jamunson@jenner.com
 edeutsch@jenner.com
 aramamurti@jenner.com
 * *Appearing pro hac vice*

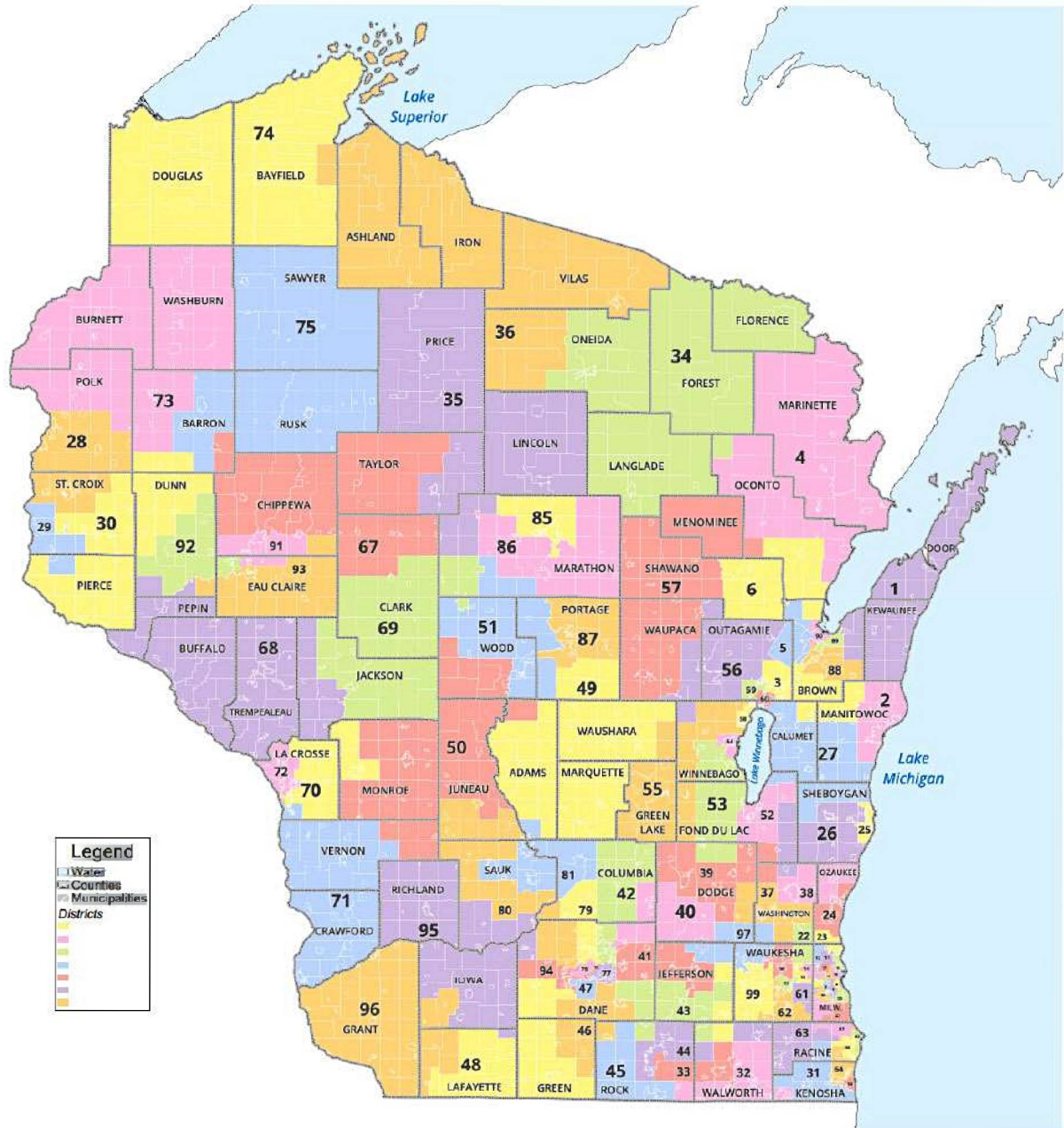
TABLE OF CONTENTS

The Wright Map—Assembly Districts (Statewide).....	App. 4
The Wright Map—Senate Districts (Statewide).....	App. 5
The Wright Map—Assembly Districts (Milwaukee, Waukesha, Ozaukee, and Washington Counties).....	App. 6
The Wright Map—Senate Districts (Milwaukee, Waukesha, Ozaukee, and Washington Counties).....	App. 7
The Wright Map—Assembly Districts (Milwaukee County)	App. 8
The Wright Map—Senate Districts (Milwaukee County).....	App. 9
The Wright Map—Assembly Districts (Racine, Kenosha, and Walworth Counties).....	App. 10
The Wright Map—Senate Districts (Racine, Kenosha, and Walworth Counties).....	App. 11
The Wright Map—Assembly Districts (Dane, Rock, Green, Lafayette, Iowa, Sauk, and Columbia Counties).....	App. 12
The Wright Map—Senate Districts (Dane, Rock, Green, Lafayette, Iowa, Sauk, and Columbia Counties).....	App. 13
The Wright Map—Assembly Districts (Dane County)	App. 14
The Wright Map—Senate Districts (Dane County).....	App. 15
The Wright Map—Assembly Districts (La Crosse County)	App. 16
The Wright Map—Senate Districts (La Crosse County).....	App. 17
The Wright Map—Assembly Districts (Eau Claire, Chippewa, Dunn, St. Croix, and Pierce Counties).....	App. 18
The Wright Map—Senate Districts (Eau Claire, Chippewa, Dunn, St. Croix, and Pierce Counties).....	App. 19
The Wright Map—Assembly Districts (Marathon, Portage, Wood, and Lincoln Counties)	App. 20
The Wright Map—Senate Districts (Marathon, Portage, Wood, and Lincoln Counties).....	App. 21

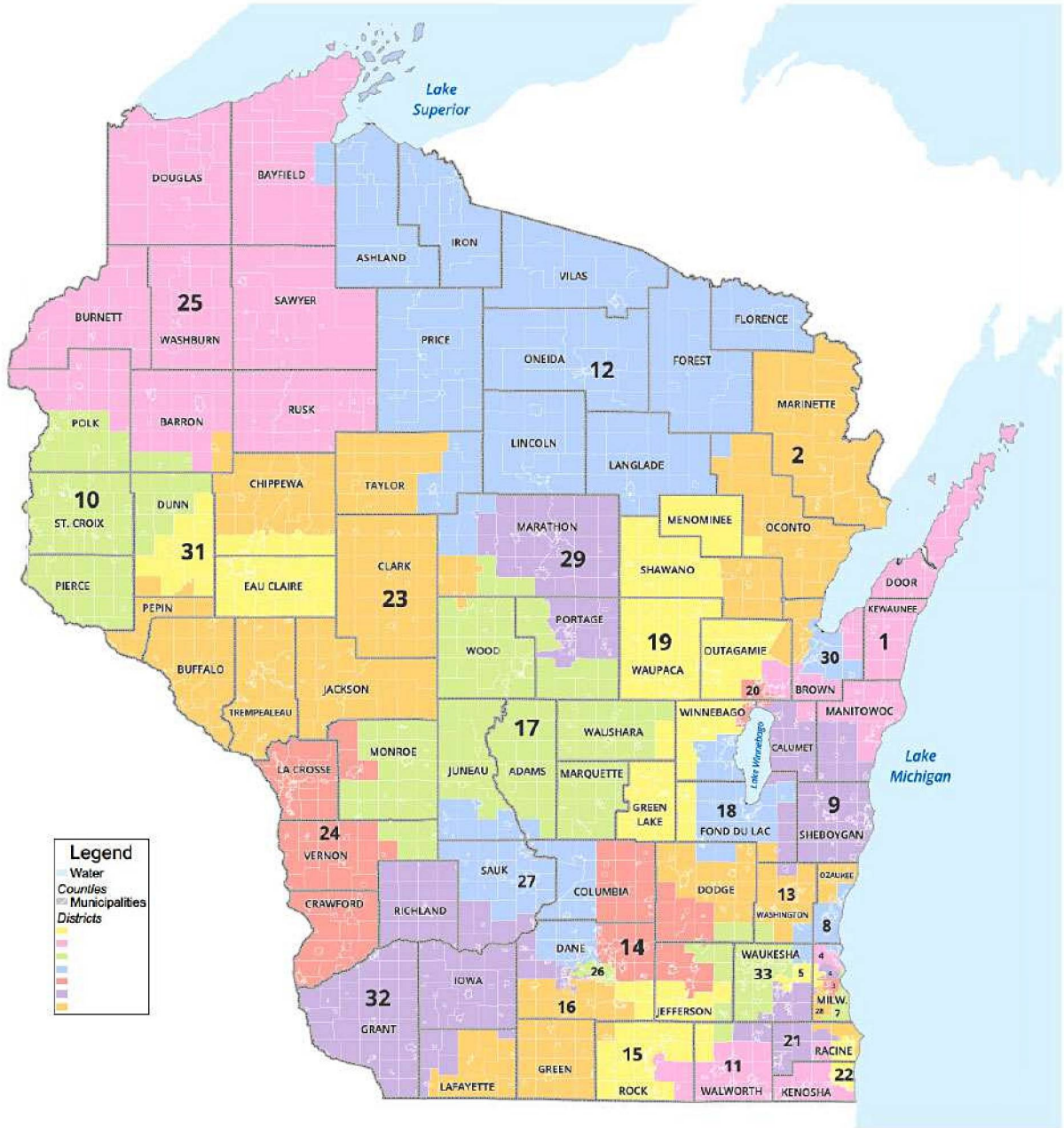
The Wright Map—Assembly Districts (Brown, Outagamie,
Winnebago, Calumet, Fond du Lac, Sheboygan, Manitowoc,
and Kewaunee Counties) App. 22

The Wright Map—Senate Districts (Brown, Outagamie,
Winnebago, Calumet, Fond du Lac, Sheboygan, Manitowoc,
and Kewaunee Counties) App. 23

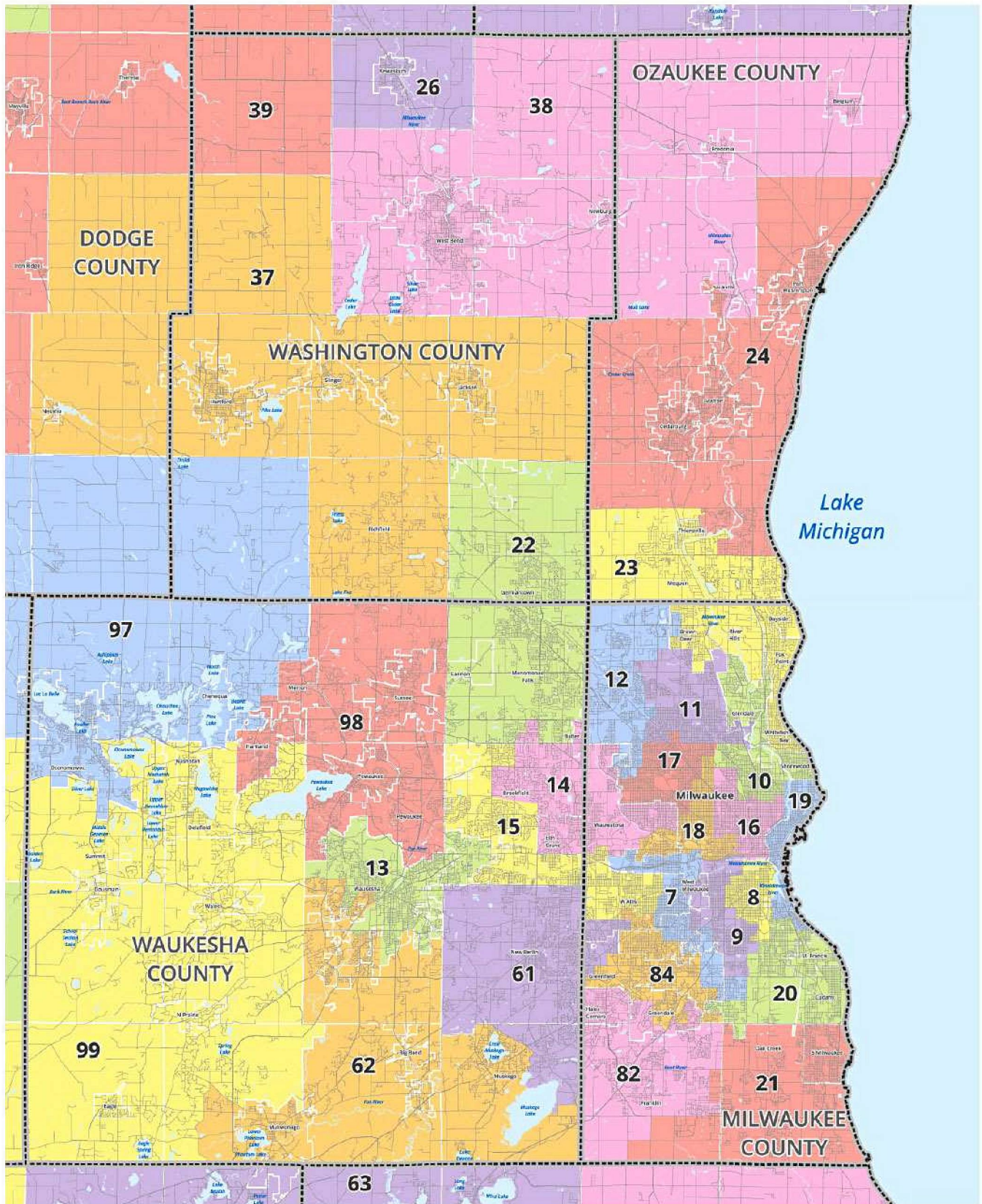
The Wright Map—Assembly Wisconsin



The Wright Map—Senate Wisconsin

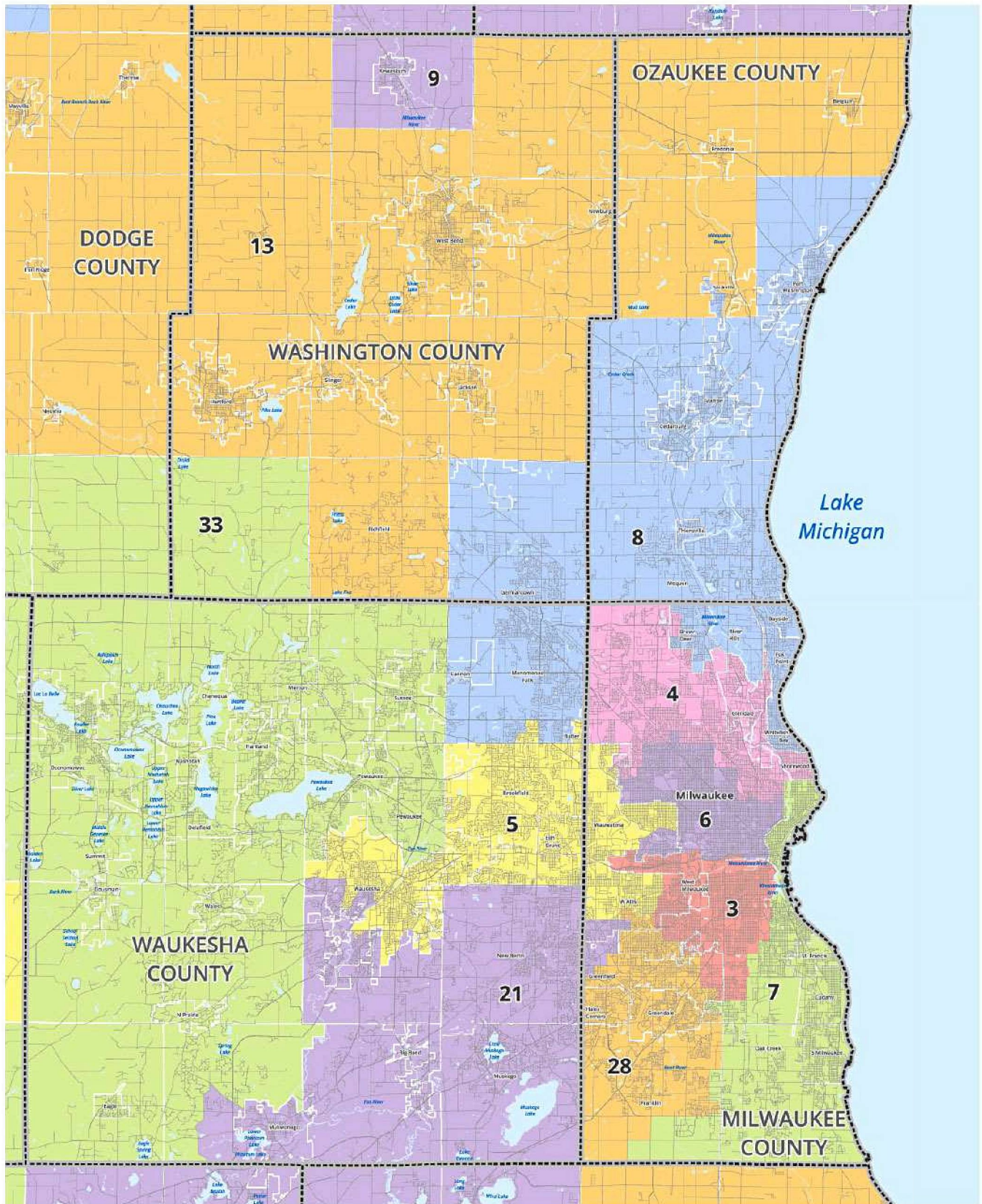


The Wright Map—Assembly Milwaukee, Waukesha, Ozaukee, and Washington Counties



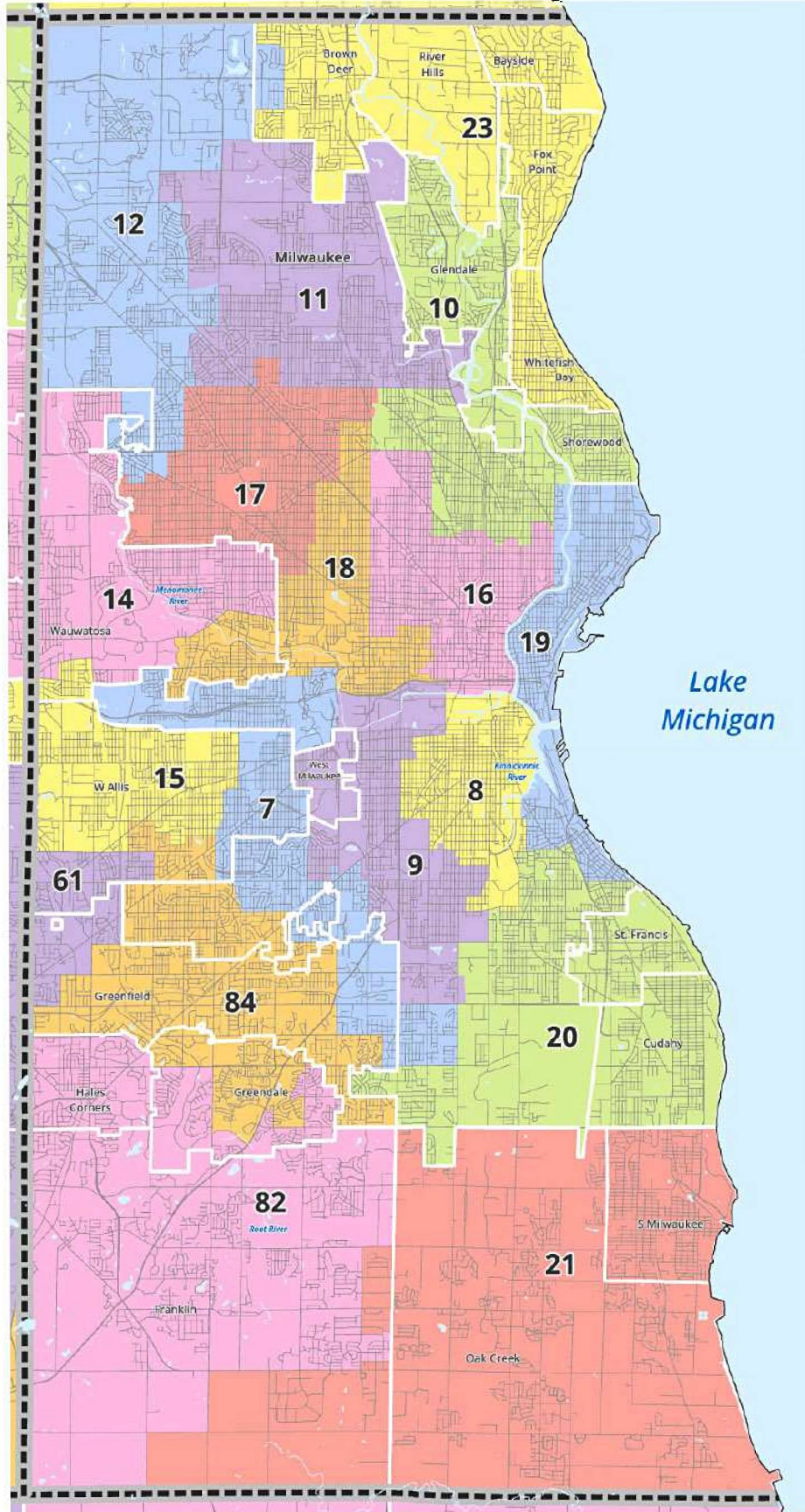
App. 6

The Wright Map—Senate Milwaukee, Waukesha, Ozaukee, and Washington Counties



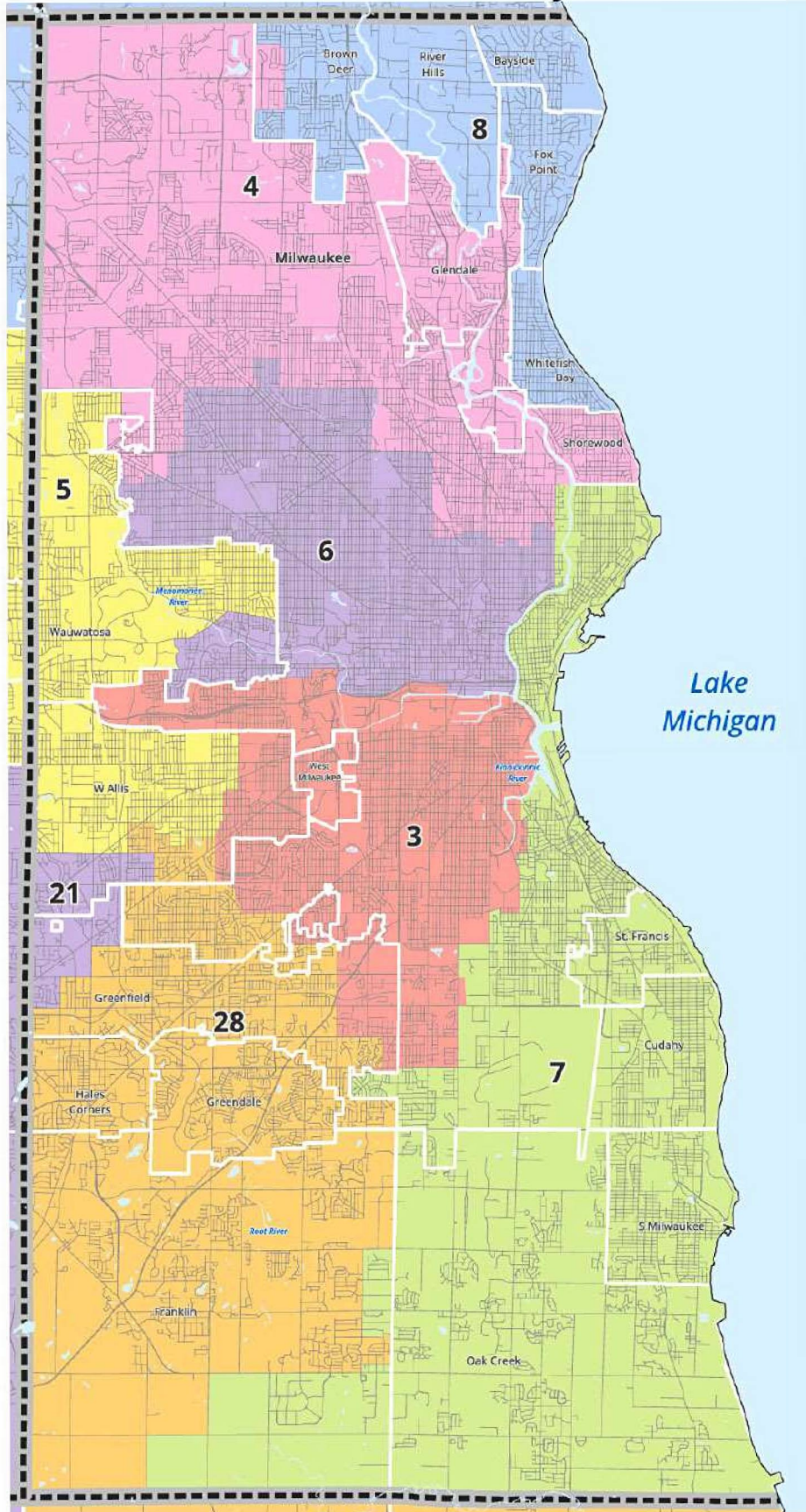
App. 7

The Wright Map—Assembly Milwaukee County



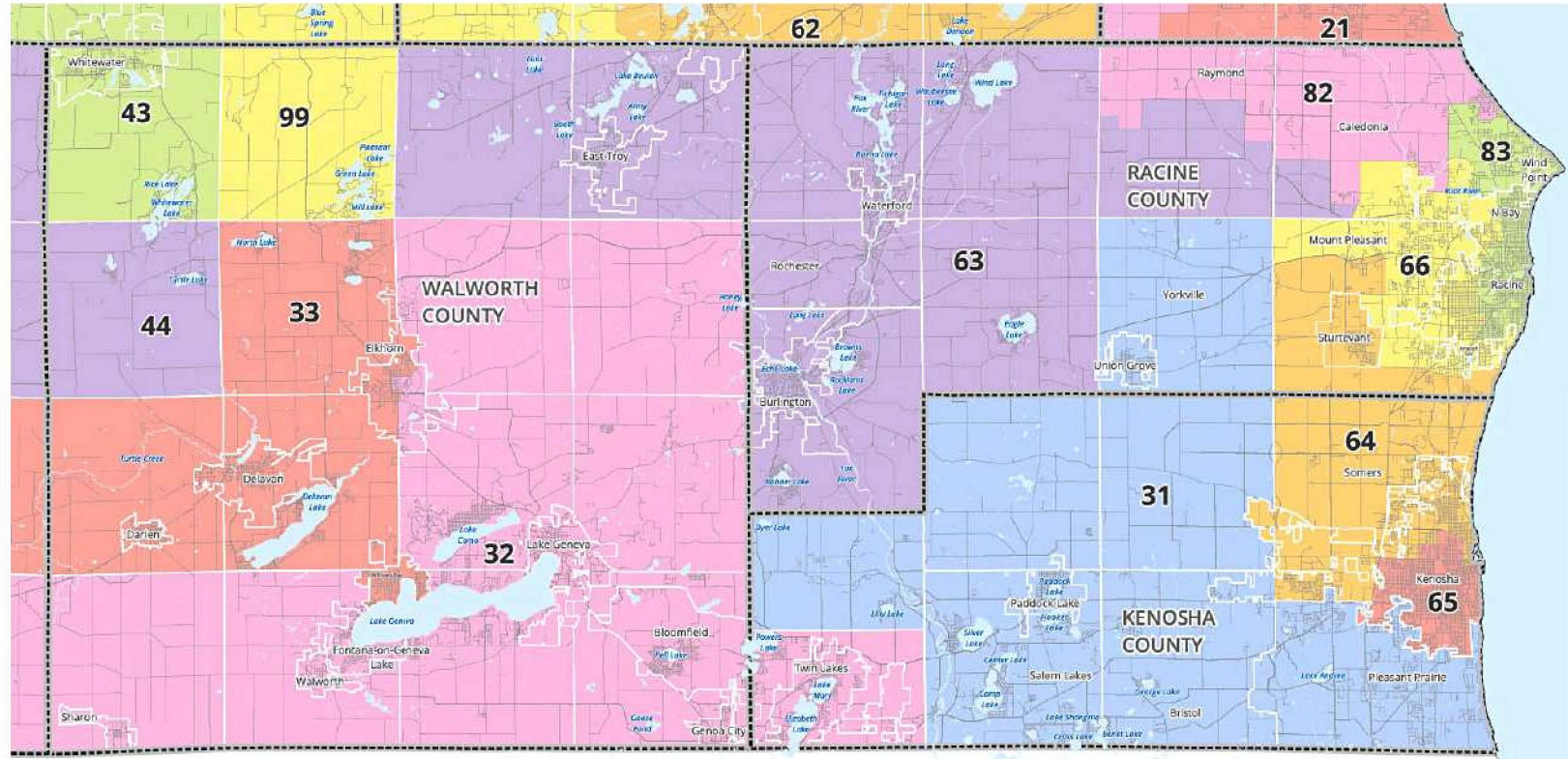
App. 8

The Wright Map—Senate Milwaukee County

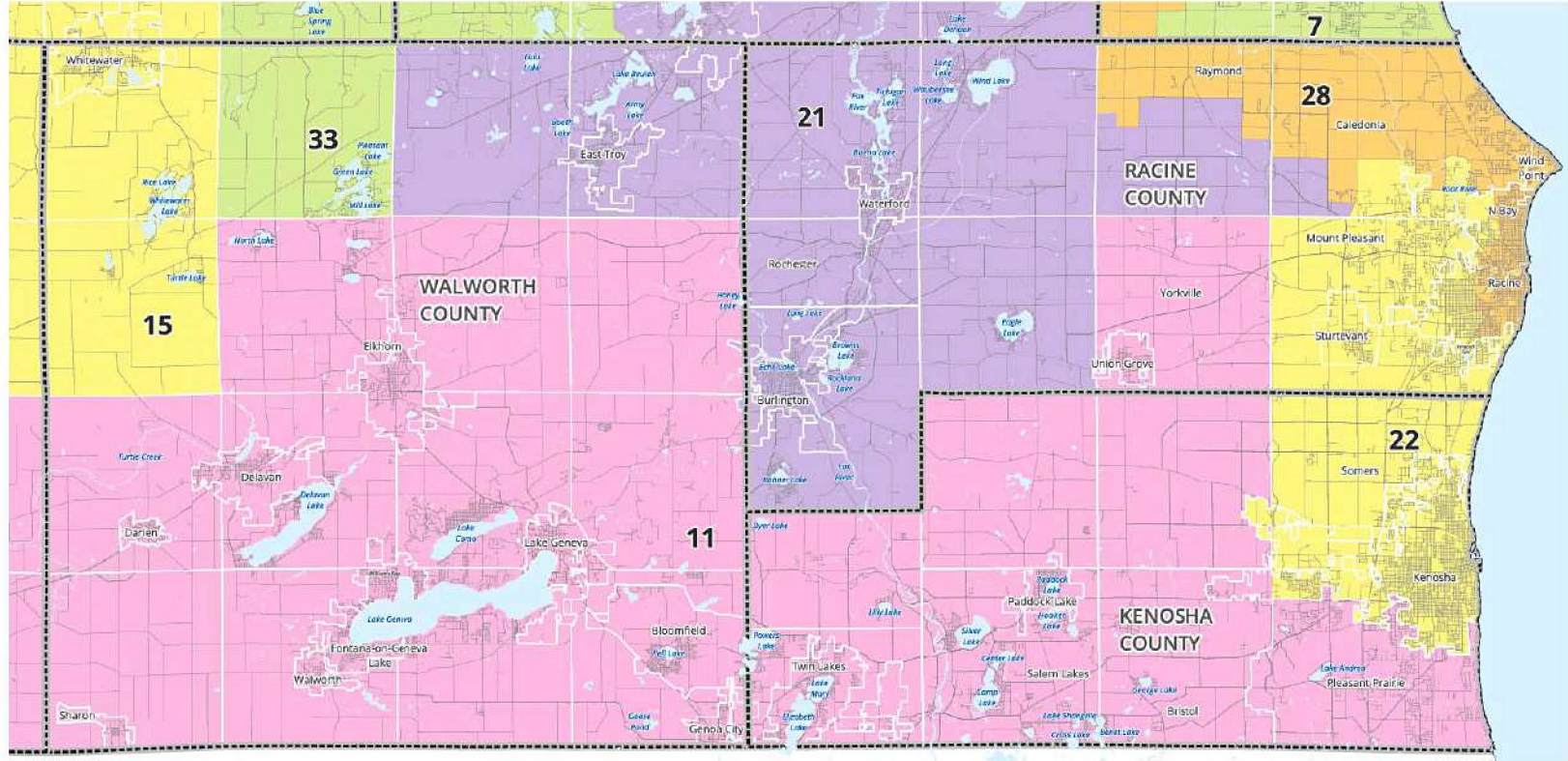


App. 9

The Wright Map—Assembly Racine, Kenosha, and Walworth Counties

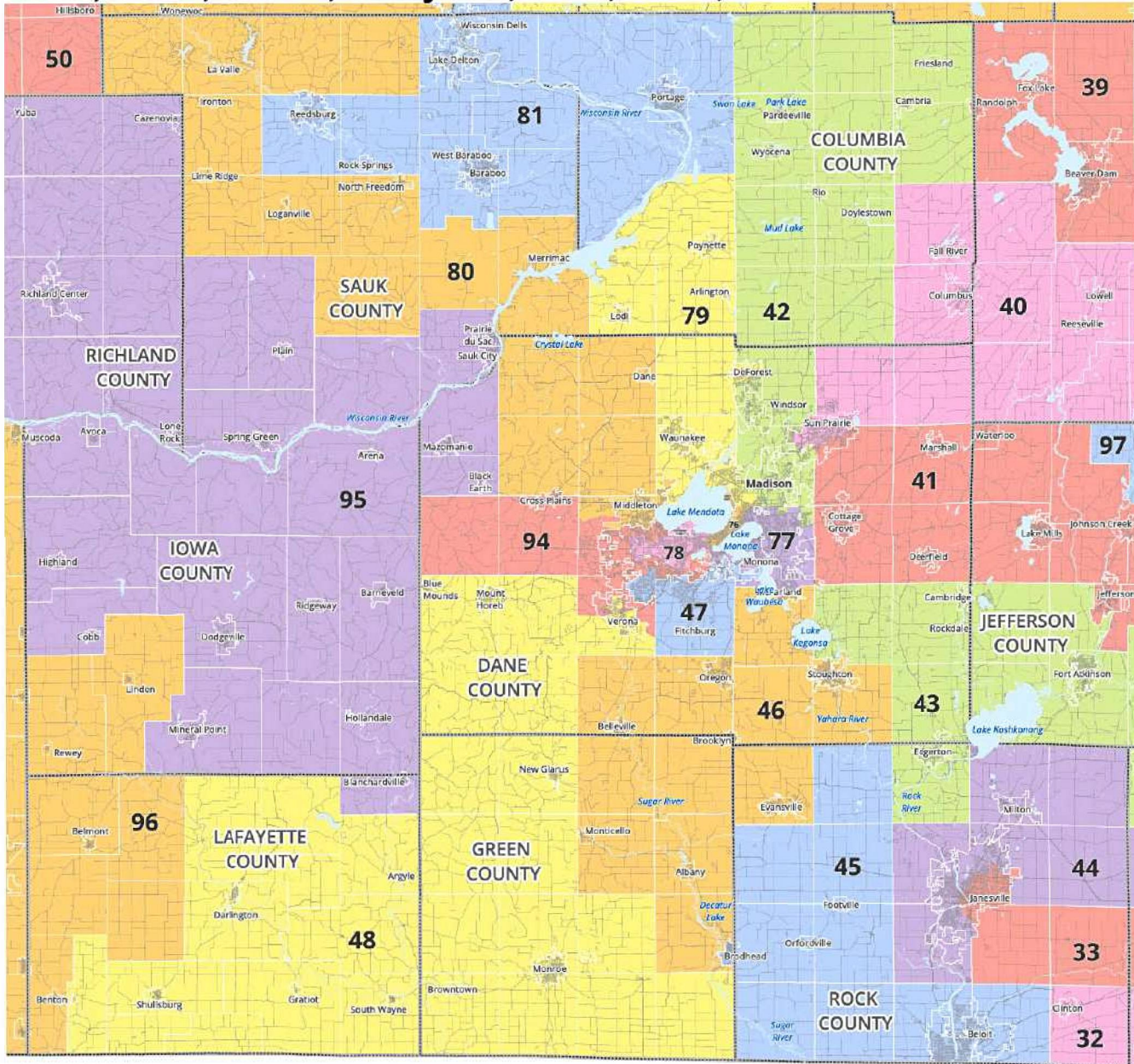


The Wright Map—Senate Racine, Kenosha, and Walworth Counties



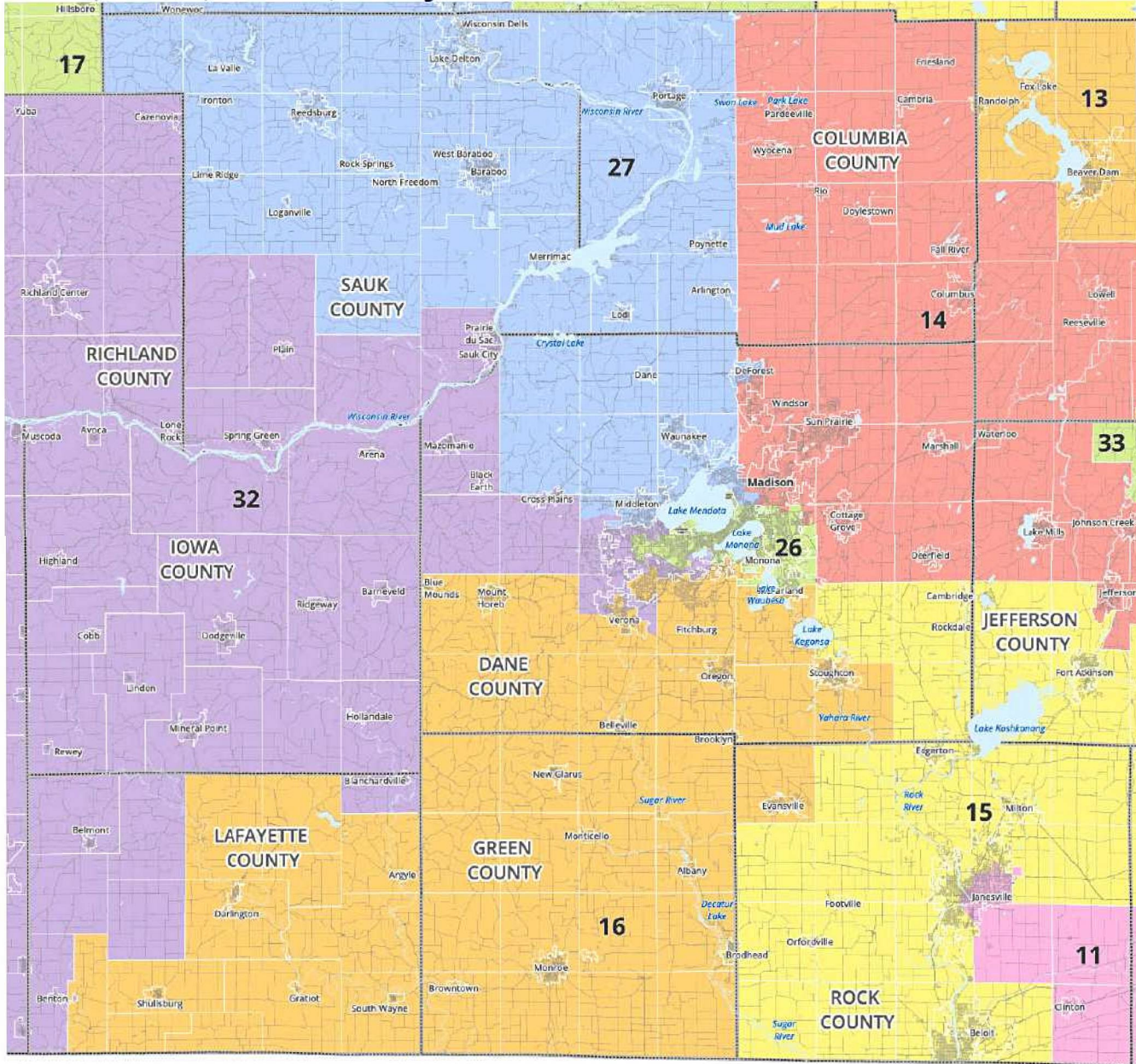
App. 11

The Wright Map—Assembly Dane, Rock, Green, Lafayette, Iowa, Sauk, and Columbia Counties



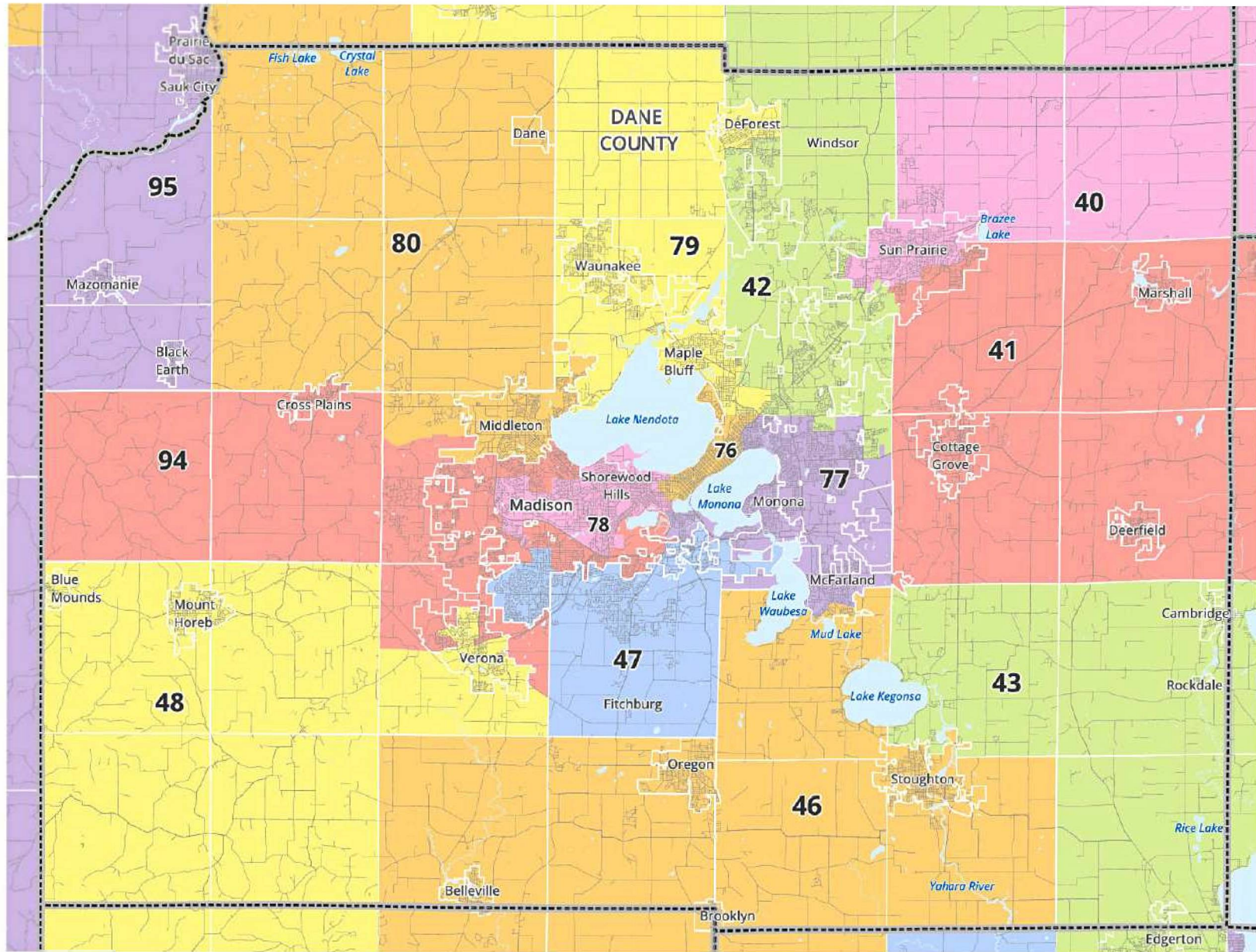
App. 12

The Wright Map—Senate Dane, Rock, Green, Lafayette, Iowa, Sauk, and Columbia Counties



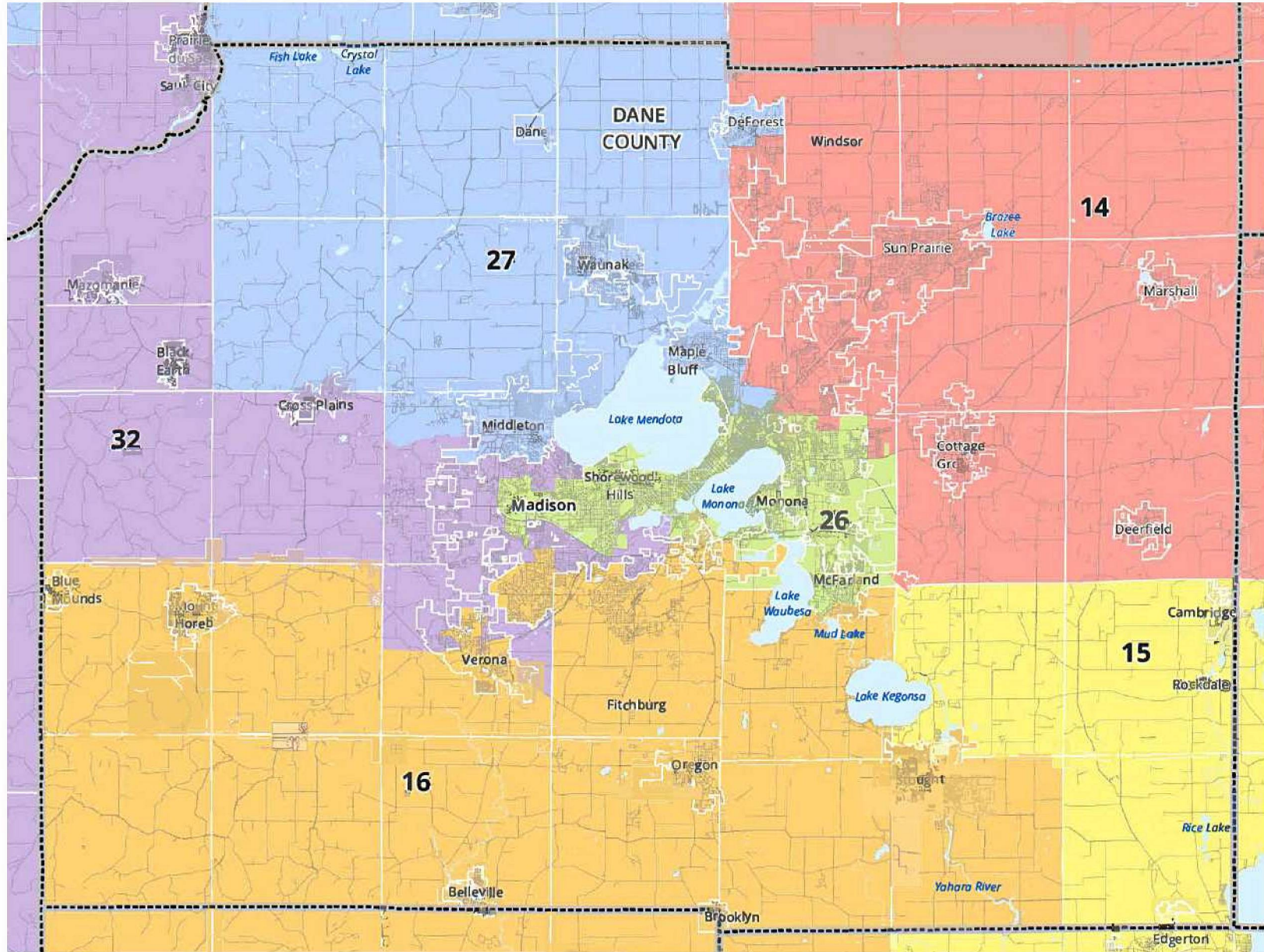
App. 13

The Wright Map—Assembly Dane County



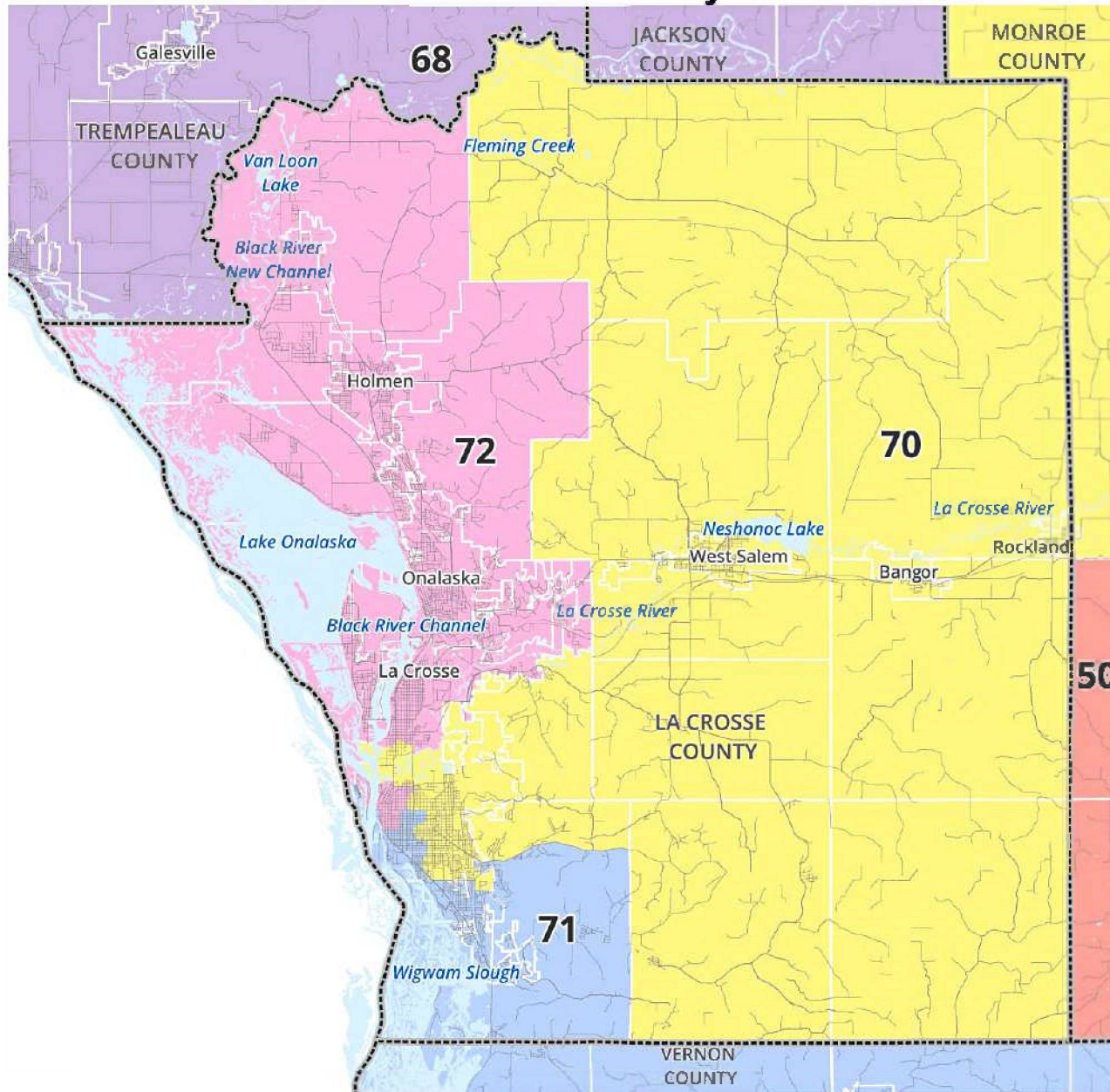
App. 14

The Wright Map—Senate Dane County



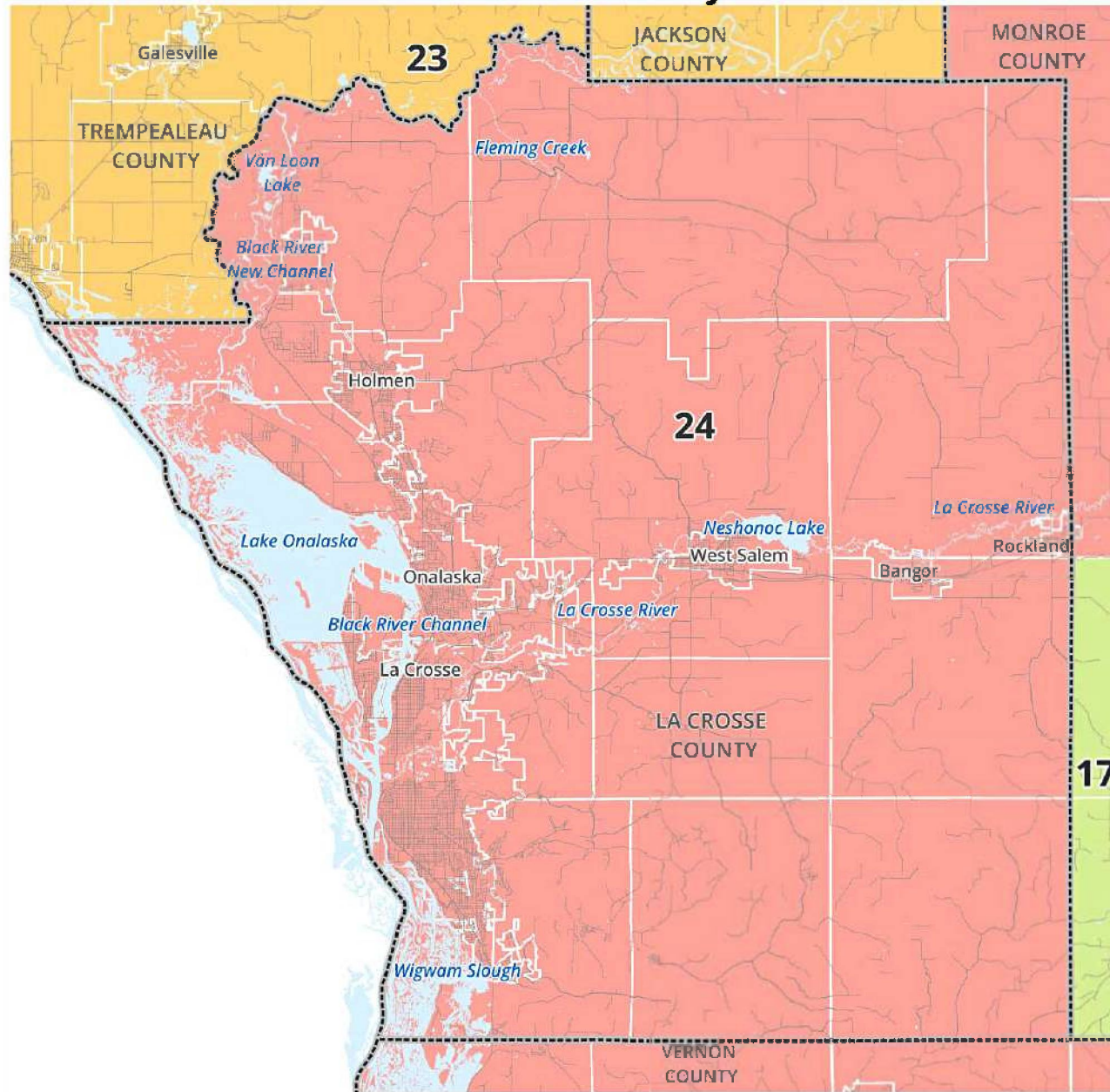
App. 15

The Wright Map—Assembly La Crosse County



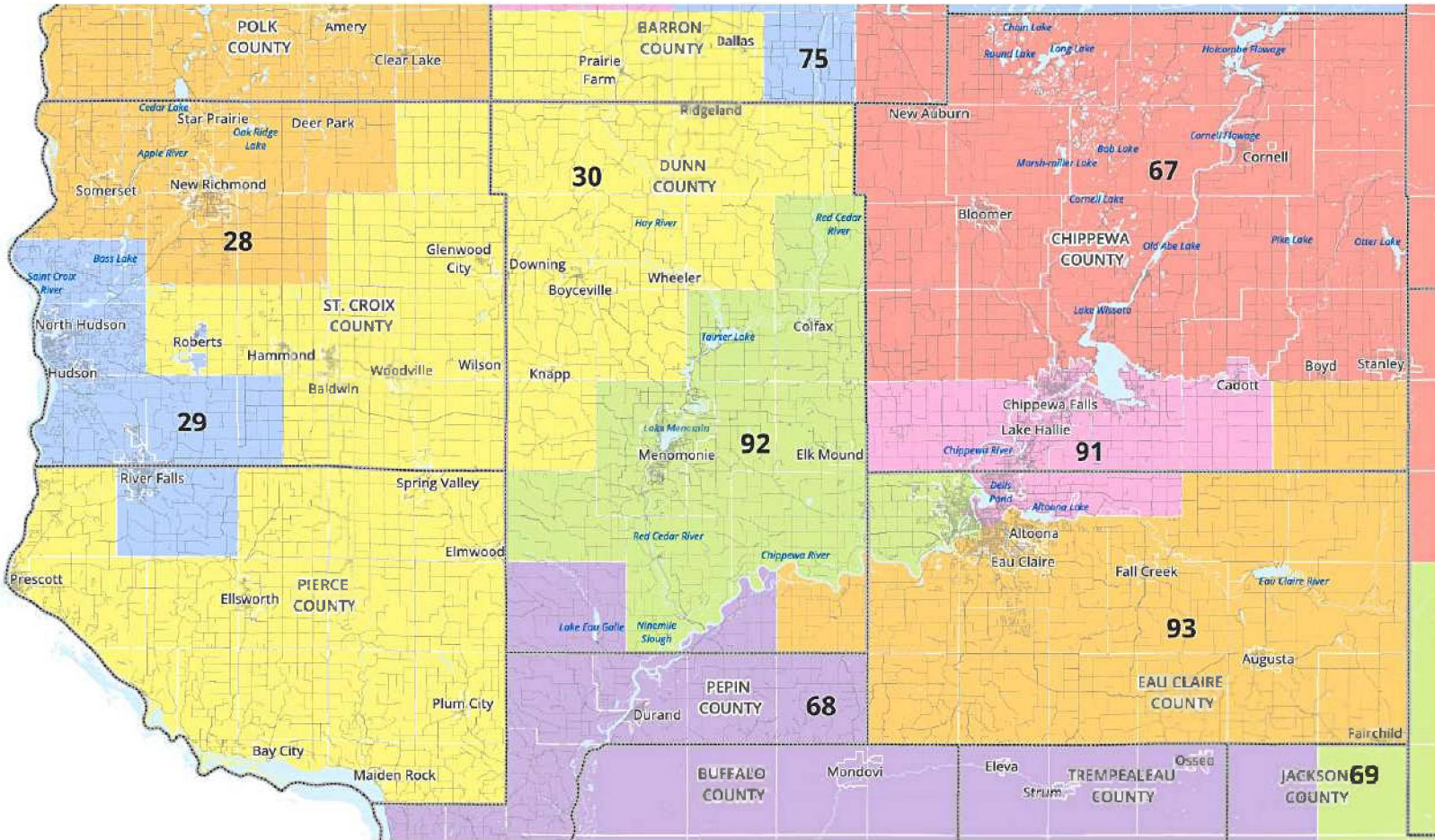
App. 16

The Wright Map—Senate La Crosse County

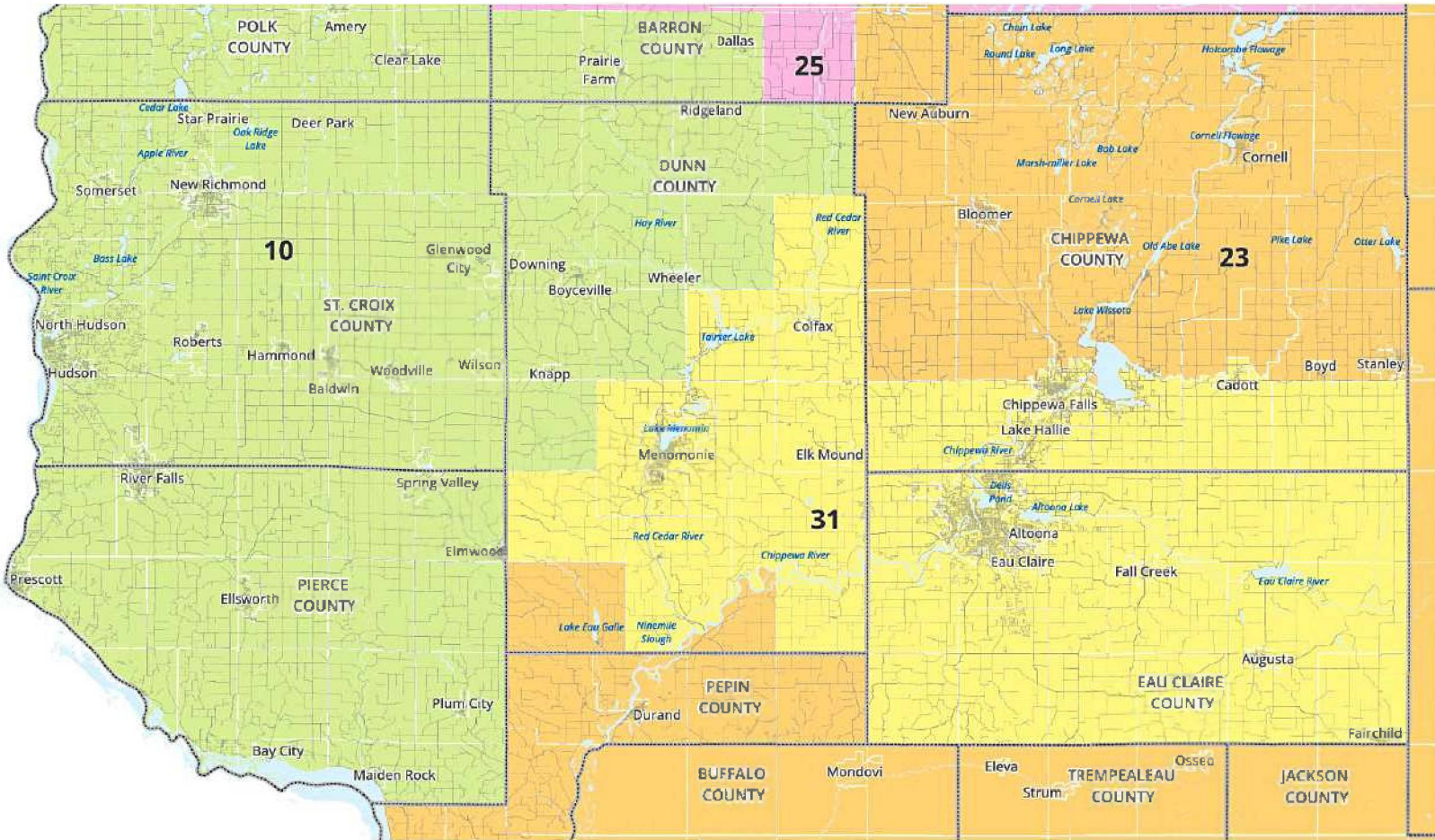


App. 17

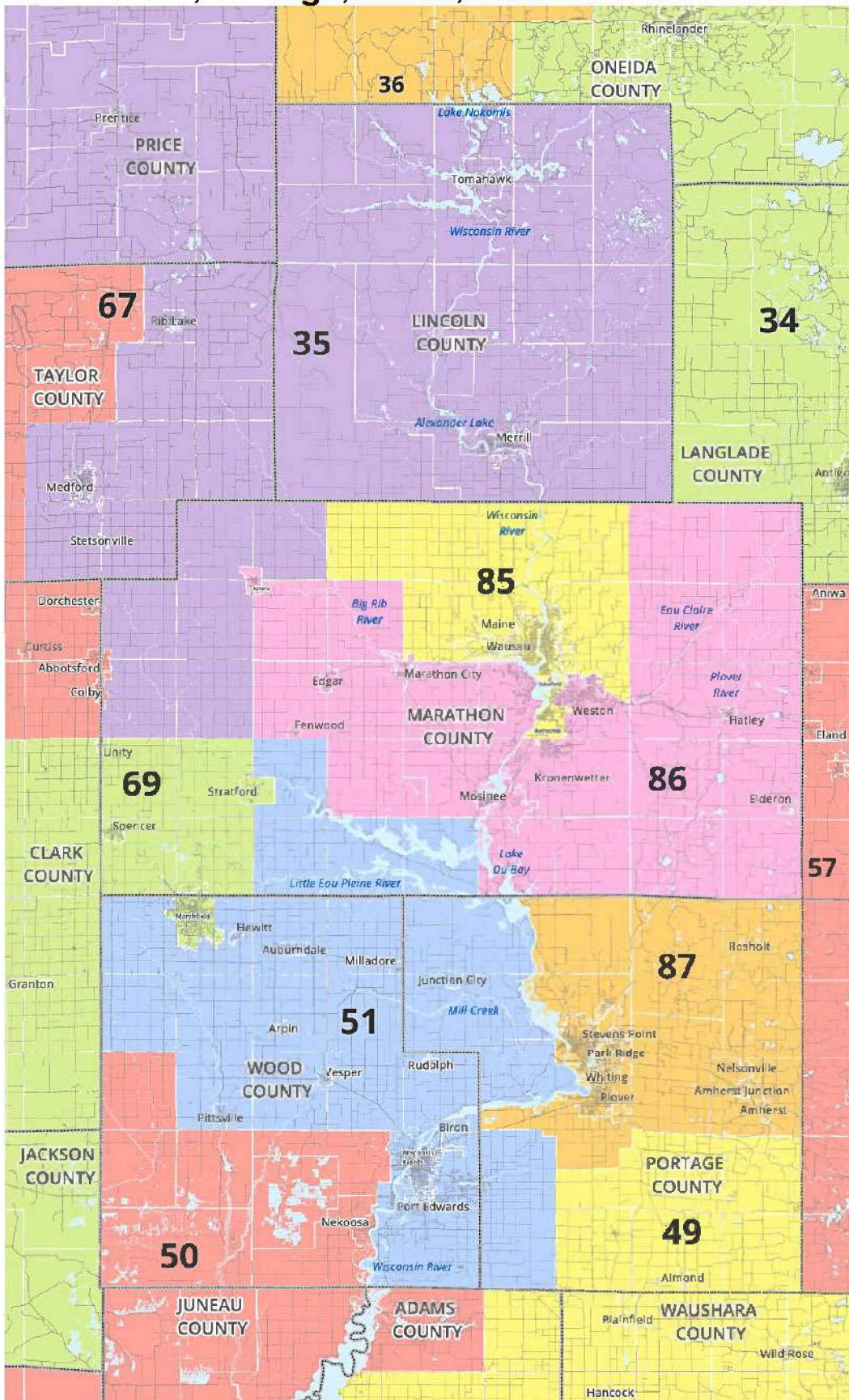
The Wright Map—Assembly Eau Claire, Chippewa, Dunn, St. Croix, and Pierce Counties



The Wright Map—Senate Eau Claire, Chippewa, Dunn, St. Croix, and Pierce Counties

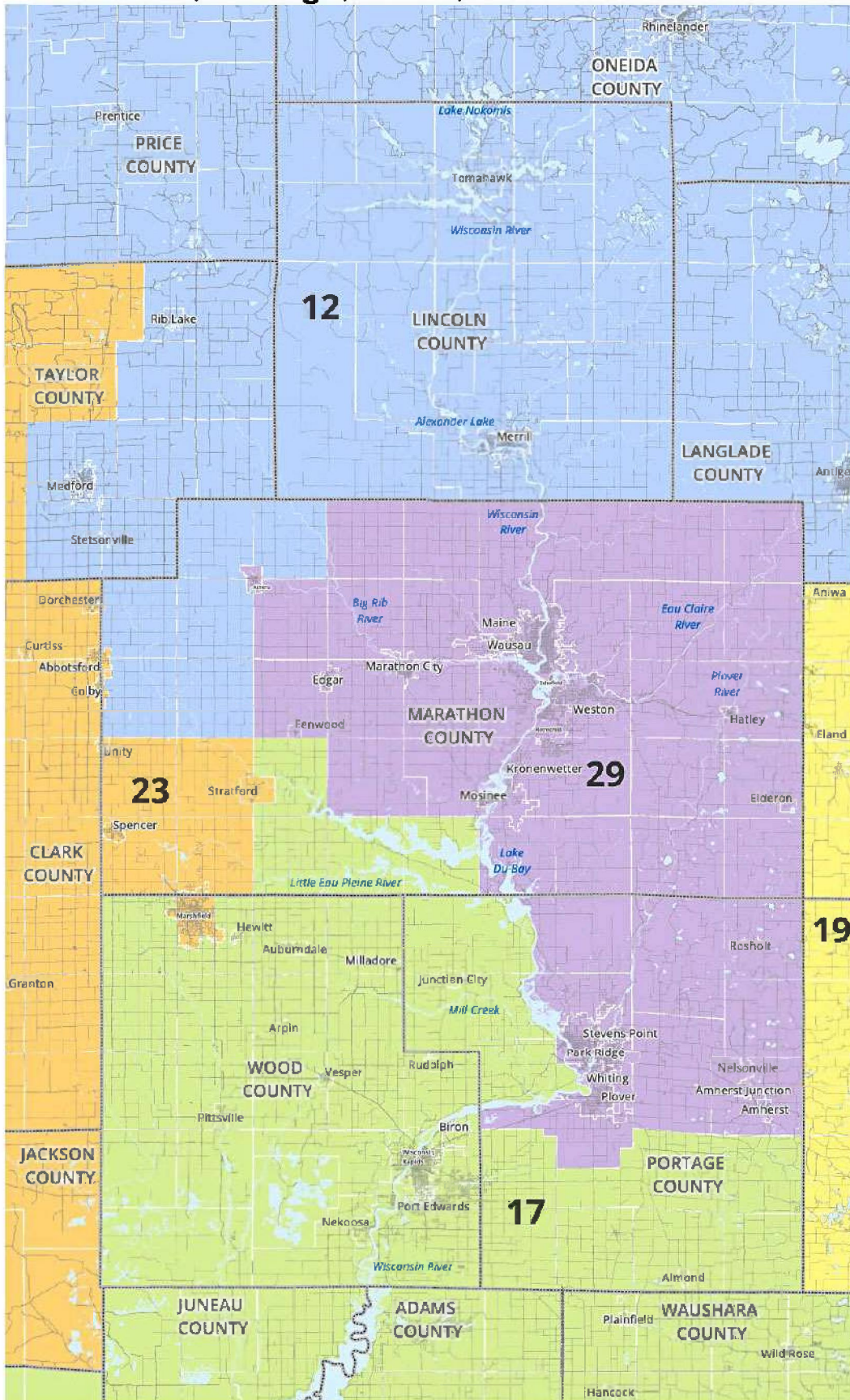


The Wright Map—Assembly Marathon, Portage, Wood, and Lincoln Counties



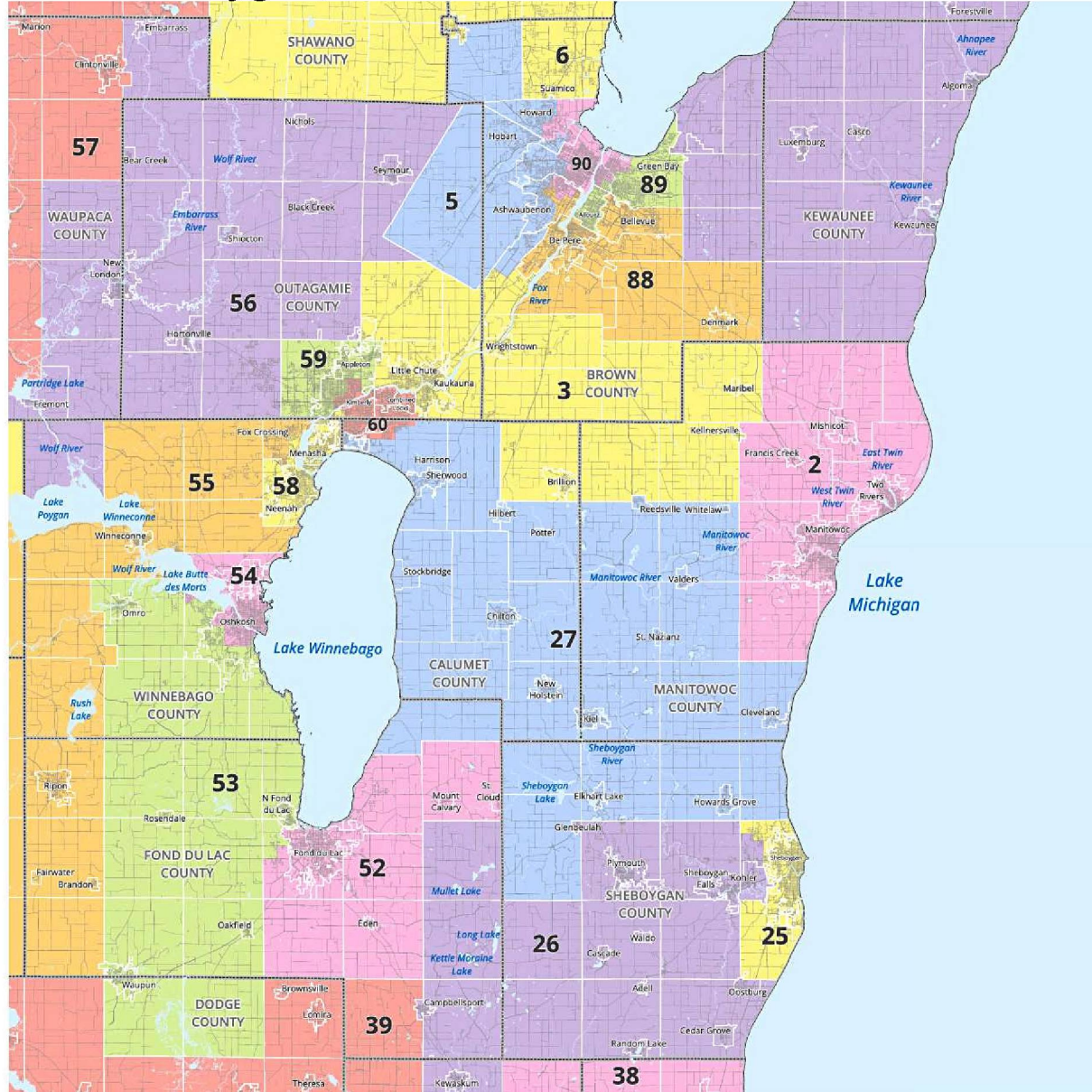
App. 20

The Wright Map—Senate Marathon, Portage, Wood, and Lincoln Counties



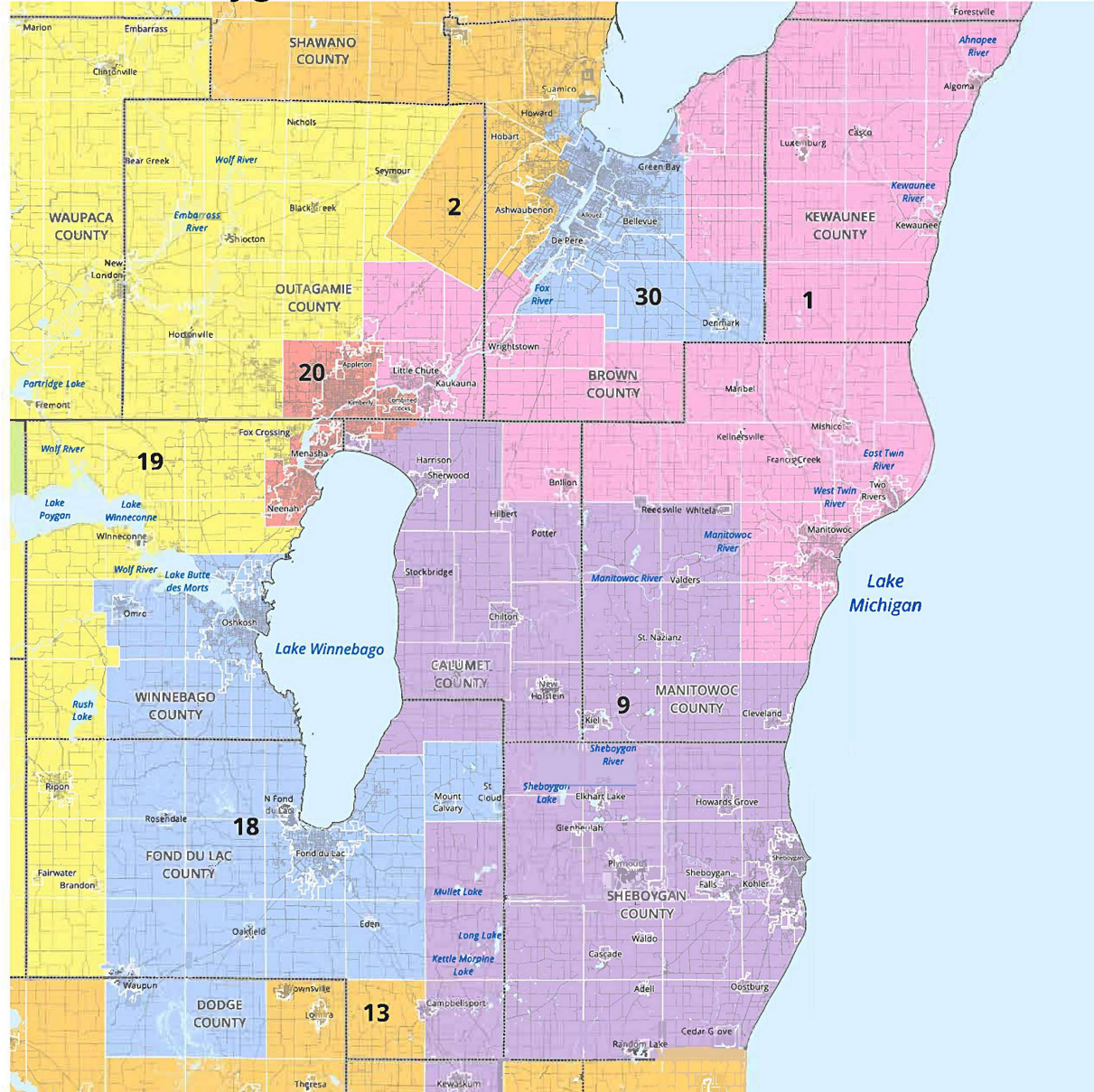
App. 21

The Wright Map—Assembly Brown, Outagamie, Winnebago, Calumet, Fond du Lac, Sheboygan, Manitowoc, and Kewaunee Counties



App. 22

The Wright Map—Senate Brown, Outagamie, Winnebago, Calumet, Fond du Lac, Sheboygan, Manitowoc, and Kewaunee Counties



App. 23