

No. 2021AP1450-OA

IN THE SUPREME COURT OF WISCONSIN

BILLIE JOHNSON, ERIC O'KEEFE,
ED PERKINS, AND RONALD ZAHN,
Petitioners,

BLACK LEADERS ORGANIZING FOR COMMUNITIES,
VOCES DE LA FRONTERA, LEAGUE OF WOMEN VOTERS OF WISCONSIN,
CINDY FALLONA, LAUREN STEPHENSON, REBECCA ALWIN, CONGRESSMAN
GLENN GROTHMAN, CONGRESSMAN MIKE GALLAGHER, CONGRESSMAN
BRYAN STEIL, CONGRESSMAN TOM TIFFANY, CONGRESSMAN SCOTT FITZGER-
ALD, LISA HUNTER, JACOB ZABEL, JENNIFER OH, JOHN PERSA, GERALDINE
SCHERTZ, KATHLEEN QUALHEIM, GARY KRENZ, SARAH J. HAMILTON,
STEPHEN JOSEPH WRIGHT, JEAN-LUC THIFFEAULT, AND SOMESH JHA,
Intervenors-Petitioners,

v.

WISCONSIN ELECTIONS COMMISSION, MARGE BOSTELMANN, in her official
capacity as a member of the Wisconsin Elections Commission, JULIE
GLANCEY, in her official capacity as a member of the Wisconsin Elections
Commission, ANN JACOBS, in her official capacity as a member of the
Wisconsin Elections Commission, DEAN KNUDSON, in his official capacity as
a member of the Wisconsin Elections Commission, ROBERT SPINDELL, JR.,
in his official capacity as a member of the Wisconsin Elections
Commission, AND MARK THOMSEN, in his official capacity as a member of
the Wisconsin Elections Commission,
Respondents,

THE WISCONSIN LEGISLATURE, GOVERNOR TONY EVERS, in his
official capacity, AND JANET BEWLEY SENATE DEMOCRATIC MINORITY
LEADER, on behalf of the Senate Democratic Caucus,
Intervenors-Respondents.

WISCONSIN LEGISLATURE'S APPENDIX

APPENDIX TABLE OF CONTENTS

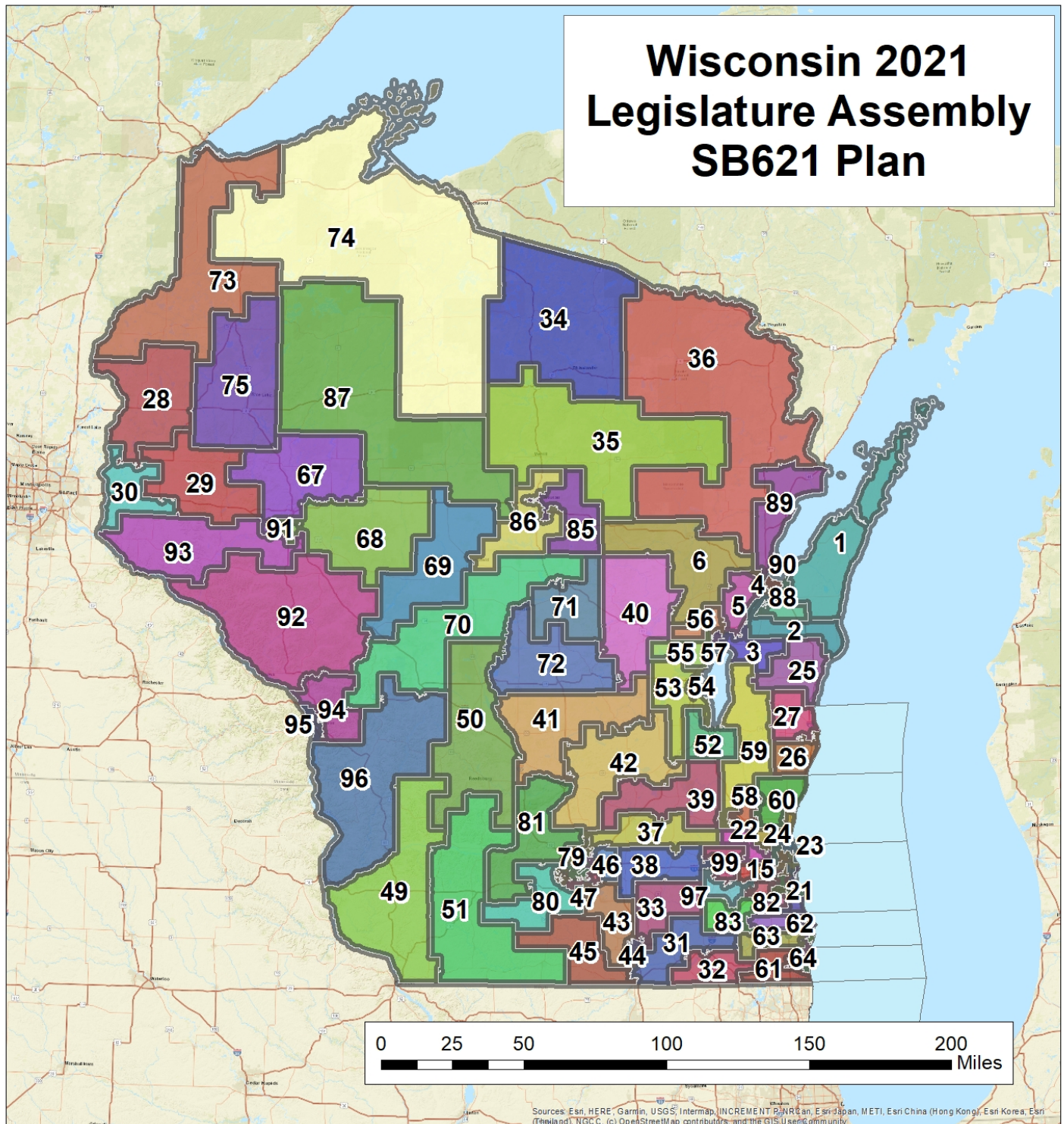
Maps

Legislature's Assembly District Plan.....	3
Legislature's Assembly District Plan (Milwaukee)	4
Legislature's Senate District Plan	5
Legislature's Senate District Plan (Milwaukee)	6
Legislature's Congressional District Plan	7
2020 Population Deviations in Existing Act 43 Districts	8
2020 Population Deviations in Existing Act 43 Districts (I-94 Corridor)	9

Tables

Legislature's Assembly District Plan Core Retention.....	10
Legislature's Senate District Plan Core Retention	19
Legislature's Plans Core Retention for <i>Baldus</i> Districts	
SD 4, SD 6, AD 10, AD 11, AD 12, AD 16, AD 17, AD 18	22
AD 8 & AD 9	23

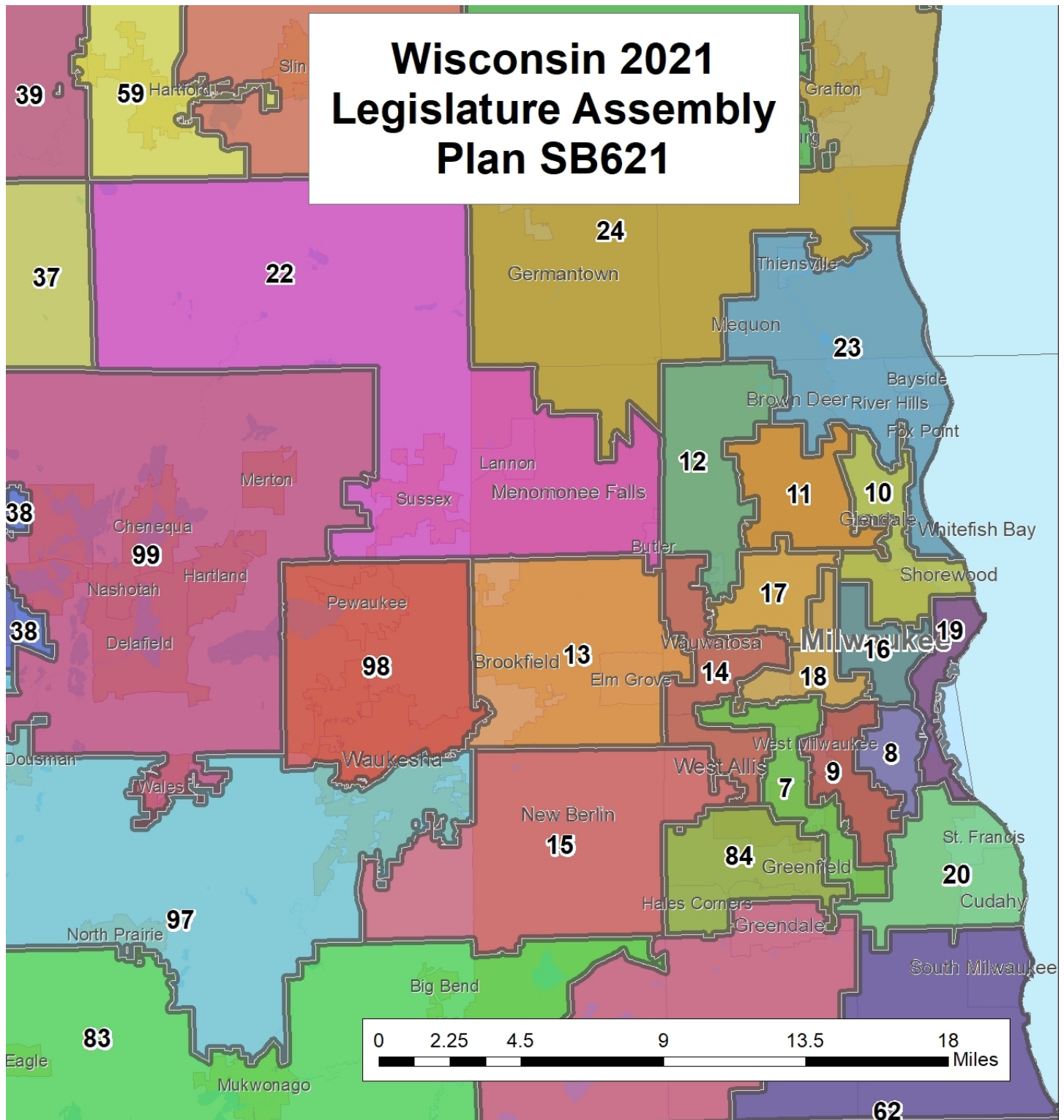
Legislature's Assembly District Plan
2021 Wis. Senate Bill 621 (enrolled)
(Bryan Report App. 4 Map 3)



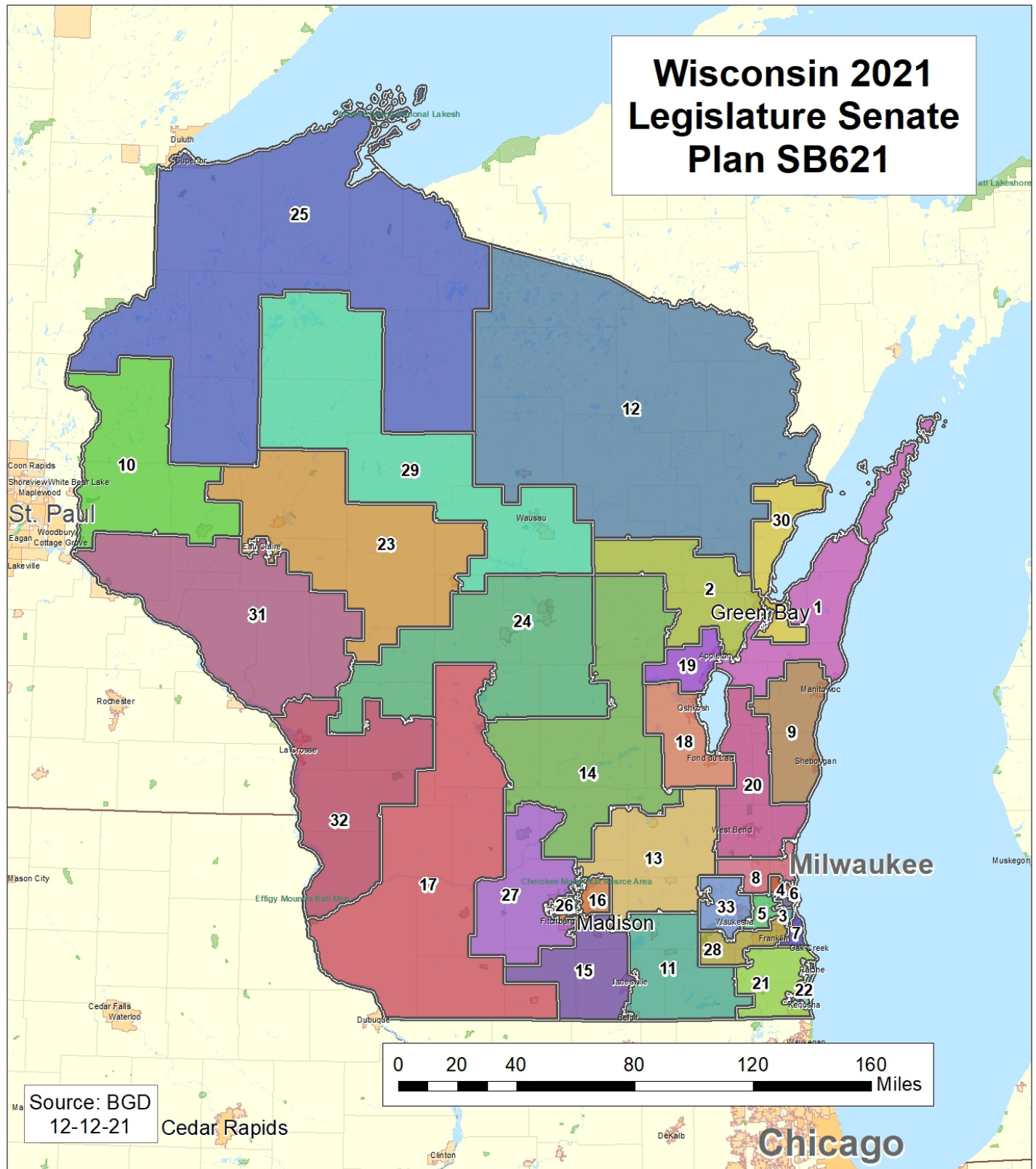
Legislature's Assembly District Plan (Milwaukee)

2021 Wis. Senate Bill 621 (enrolled)

(Bryan Report App. 4 Map 3A)



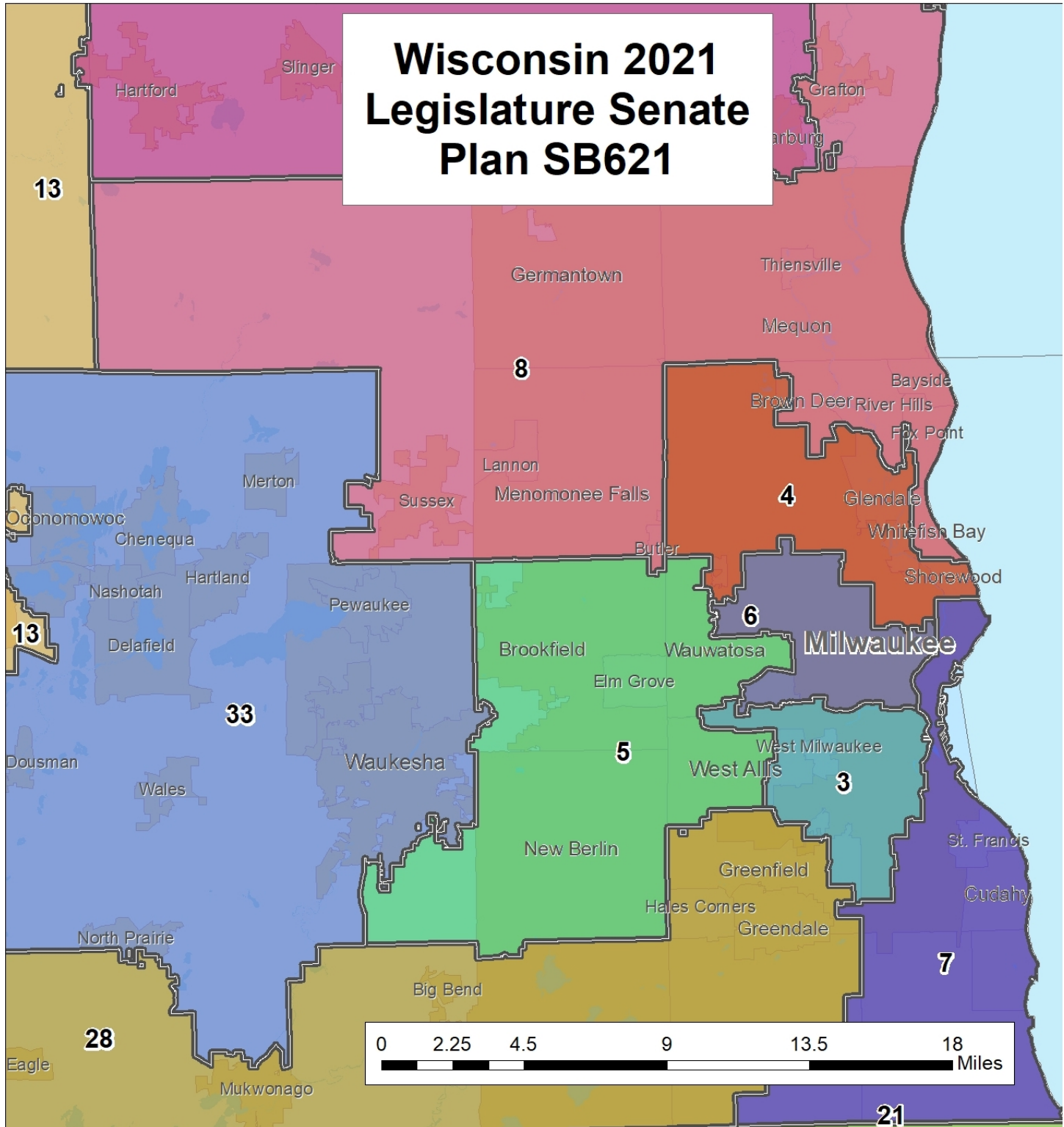
Legislature's Senate District Plan
2021 Wis. Senate Bill 621 (enrolled)
(Bryan Report App. 4 Map 5)



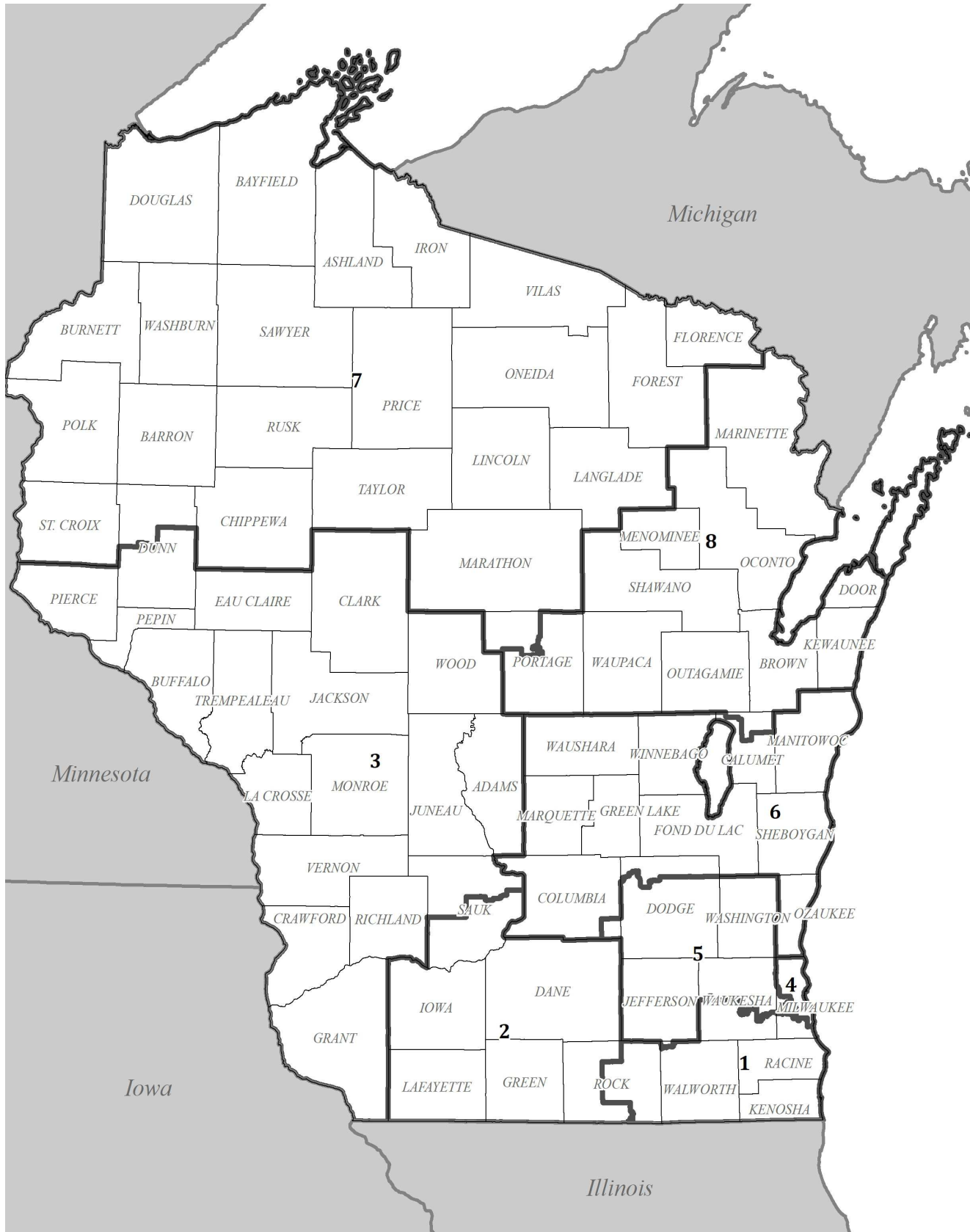
Legislature's Senate District Plan (Milwaukee)

2021 Wis. Senate Bill 621 (enrolled)

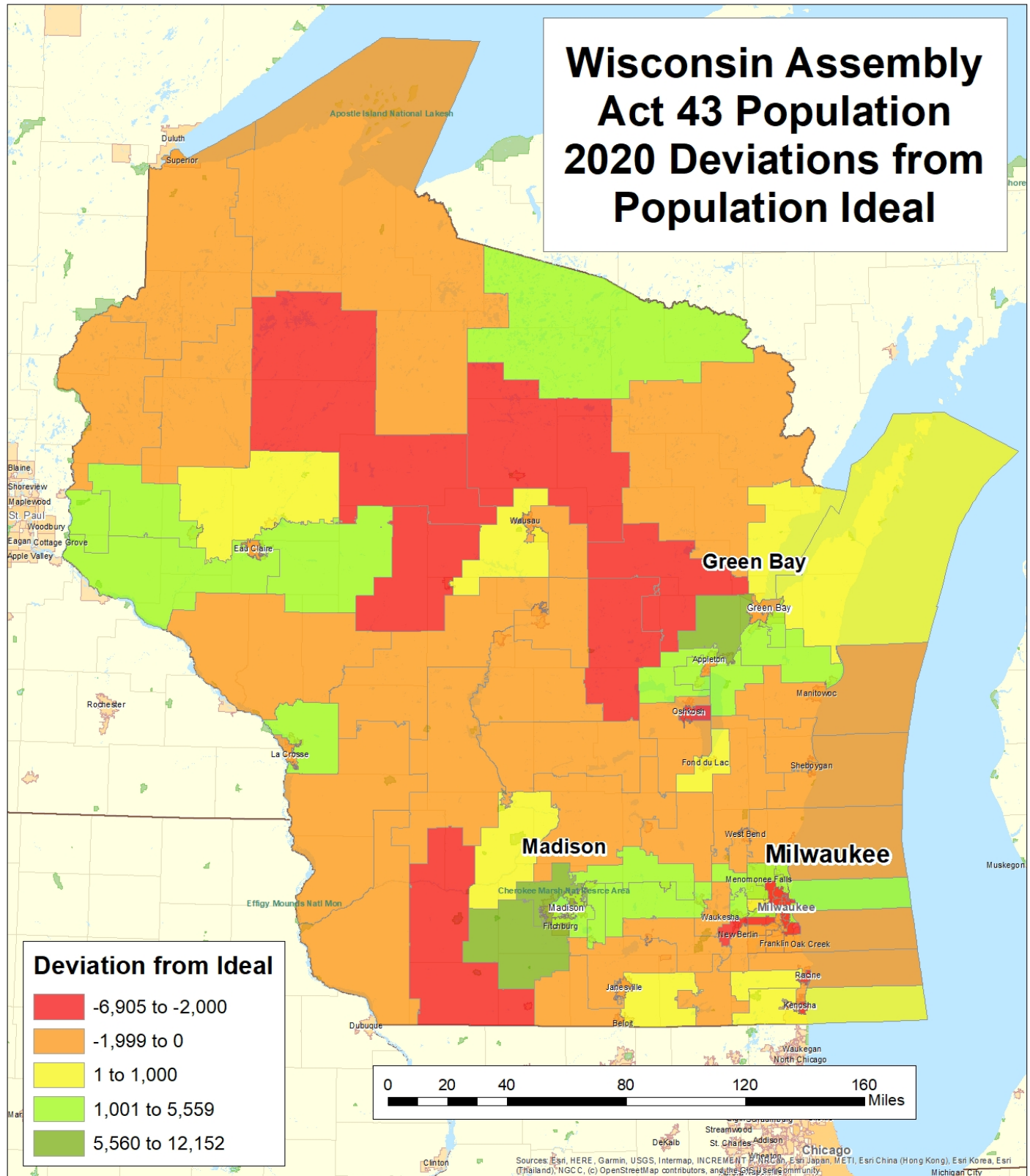
(Bryan Report App. 4 Map 5A)



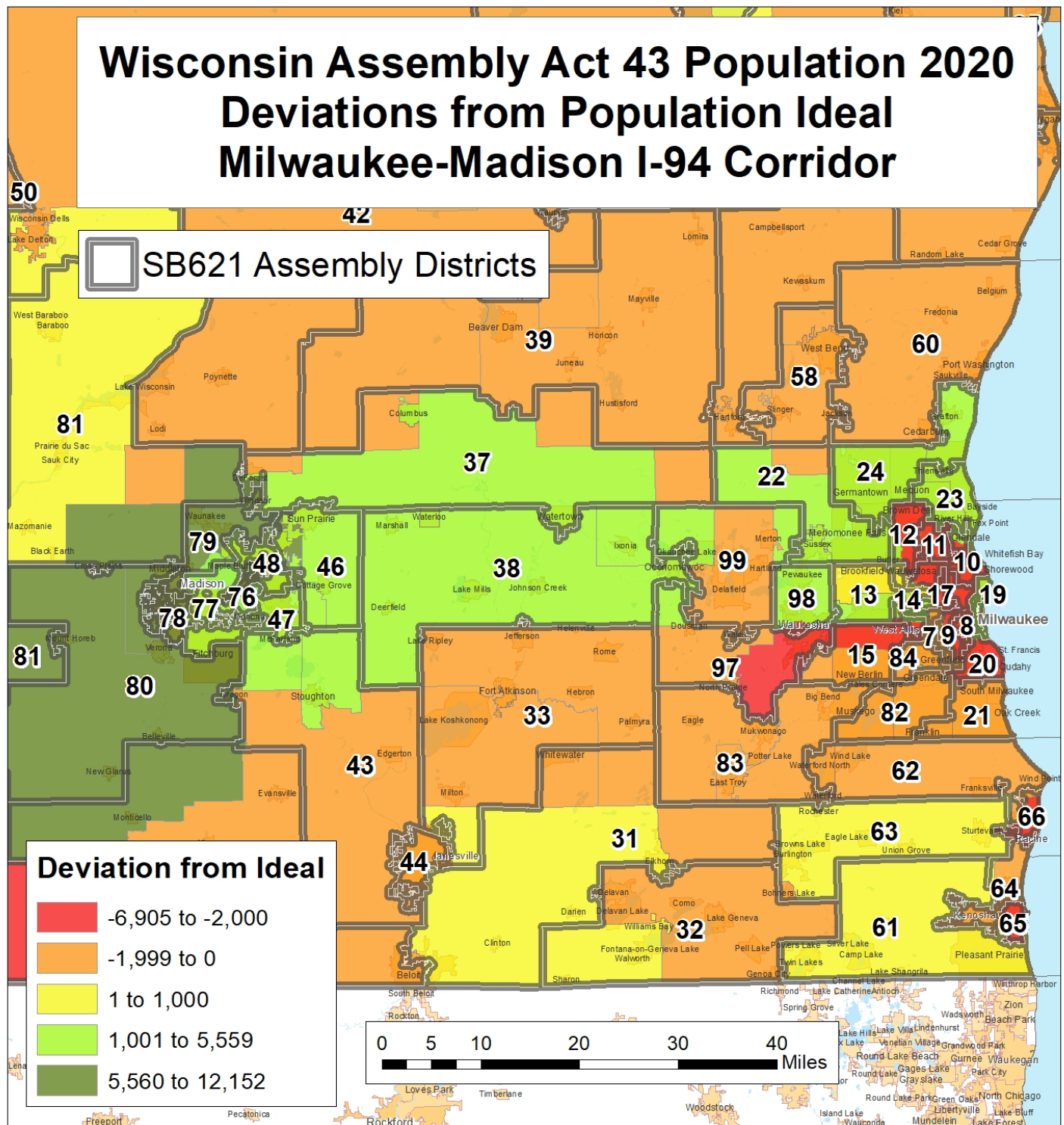
Legislature's Congressional District Plan
2021 Wis. Senate Bill 622 (enrolled)



2020 Population Deviations in Existing Act 43 Districts
(Bryan Report App. 4 Map 1)



2020 Population Deviations in Existing Act 43 Districts (I-94 Corridor)
(Bryan Report App. 4 Map 2)



Legislature's Assembly District Plan Core Retention
--

Act 43 Assembly Plan	Legislature's Assembly Plan	Total Population	Total Percentage
1	1	59,444	99.3%
	2	390	0.7%
2	2	48,641	77.7%
	25	4,185	6.7%
	88	9,738	15.6%
3	3	53,573	86.5%
	5	6,202	10.0%
	59	2,131	3.4%
4	2	11	0.0%
	4	52,489	89.4%
	5	4,795	8.2%
	90	1,421	2.4%
5	4	4,344	6.4%
	5	48,377	71.7%
	6	11,085	16.4%
	56	3,622	5.4%
6	6	48,049	83.7%
	36	1,803	3.1%
	40	7,557	13.2%
7	7	51,733	87.2%
	9	7,622	12.8%
8	8	53,999	100.0%
9	7	27	0.0%
	8	5,363	9.4%
	9	51,949	90.6%
10	10	46,146	87.7%
	11	6,482	12.3%
11	10	6,276	11.6%
	11	46,364	85.4%
	12	1,635	3.0%
12	11	6,719	11.9%
	12	49,586	88.1%

Act 43 Assembly Plan	Legislature's Assembly Plan	Total Population	Total Percentage
13	7	7,843	12.7%
	13	29,445	47.7%
	14	14,063	22.8%
	18	10,428	16.9%
14	13	30,106	50.1%
	14	24,032	40.0%
	17	5,998	10.0%
15	14	21,514	37.6%
	15	35,631	62.4%
16	16	53,739	100.0%
17	17	52,204	94.3%
	18	3,139	5.7%
18	16	5,975	11.3%
	17	1,233	2.3%
	18	45,779	86.4%
19	8	0	0.0%
	16	0	0.0%
	19	59,320	95.6%
	20	2,736	4.4%
20	20	56,812	100.0%
21	21	58,547	99.1%
	82	553	0.9%
22	12	6,559	10.8%
	22	42,396	69.8%
	24	6,225	10.2%
	99	5,570	9.2%
23	23	40,196	66.2%
	24	20,565	33.8%
24	10	7,081	11.7%
	12	1,571	2.6%
	23	19,187	31.6%
	24	32,898	54.2%

Act 43 Assembly Plan	Legislature's Assembly Plan	Total Population	Total Percentage
25	3	3,005	5.2%
	25	53,065	91.5%
	27	857	1.5%
	59	1,059	1.8%
26	26	56,829	96.8%
	27	1,881	3.2%
27	25	2,210	3.7%
	26	96	0.2%
	27	56,988	96.1%
28	28	45,092	76.1%
	30	4,291	7.2%
	73	9,891	16.7%
29	28	13,812	22.4%
	29	42,813	69.3%
	30	5,121	8.3%
30	30	47,974	76.5%
	93	14,761	23.5%
31	31	36,364	60.7%
	32	12,844	21.4%
	33	4,836	8.1%
	44	4,678	7.8%
	45	1,230	2.1%
32	31	4,162	7.0%
	32	46,712	78.6%
	63	2,105	3.5%
	83	6,418	10.8%
33	31	2,472	4.2%
	33	32,997	56.4%
	83	23,013	39.3%
	97	8	0.0%
34	34	53,892	88.6%
	36	6,911	11.4%
35	6	320	0.6%
	34	2,076	3.7%
	35	52,572	93.2%
	85	636	1.1%
	87	827	1.5%

Act 43 Assembly Plan	Legislature's Assembly Plan	Total Population	Total Percentage
36	35	6,986	12.1%
	36	50,727	87.9%
37	37	52,570	85.9%
	38	8,612	14.1%
38	38	51,006	82.7%
	97	1,594	2.6%
	99	9,046	14.7%
39	37	3,772	6.5%
	39	51,507	88.5%
	59	2,913	5.0%
40	40	51,761	90.6%
	41	1,006	1.8%
	72	4,371	7.6%
41	41	42,250	73.2%
	42	15,493	26.8%
42	37	3,040	5.2%
	39	7,930	13.6%
	41	1,216	2.1%
	42	44,085	75.6%
	81	2,051	3.5%
43	31	13,154	22.1%
	33	18,202	30.6%
	43	27,755	46.7%
	44	90	0.2%
	45	291	0.5%
44	31	8	0.0%
	33	3,556	6.1%
	43	37	0.1%
	44	54,973	93.9%
45	31	3,434	6.0%
	45	52,059	90.3%
	51	2,171	3.8%
46	43	17,401	26.7%
	46	47,691	73.3%

Act 43 Assembly Plan	Legislature's Assembly Plan	Total Population	Total Percentage
47	43	4,882	7.7%
	46	1,353	2.1%
	47	57,221	89.9%
	48	6	0.0%
	76	56	0.1%
	77	102	0.2%
	78	21	0.0%
	80	5	0.0%
48	46	7,038	11.0%
	47	2,165	3.4%
	48	52,424	82.2%
	79	2,127	3.3%
49	49	57,941	100.0%
50	49	975	1.7%
	50	54,975	93.6%
	51	883	1.5%
	96	1,880	3.2%
51	49	552	1.0%
	50	496	0.9%
	51	55,830	98.2%
52	52	54,543	91.1%
	59	5,305	8.9%
53	42	0	0.0%
	52	3,152	5.4%
	53	53,077	90.6%
	54	2,350	4.0%
54	53	153	0.3%
	54	57,258	99.7%
55	55	54,756	88.3%
	56	6,224	10.0%
	57	1,012	1.6%
56	53	6,395	9.9%
	55	4,781	7.4%
	56	49,750	77.1%
	57	3,618	5.6%
57	3	3,150	5.4%
	57	54,787	94.6%

Act 43 Assembly Plan	Legislature's Assembly Plan	Total Population	Total Percentage
58	22	4,673	7.9%
	58	54,381	92.1%
59	26	2,715	4.7%
	27	1	0.0%
	52	1,884	3.2%
	58	5,217	9.0%
	59	48,341	83.1%
60	24	15	0.0%
	58	9	0.0%
	60	59,334	100.0%
61	61	59,405	99.1%
	64	567	0.9%
62	62	51,118	87.5%
	66	7,304	12.5%
63	62	3,273	5.5%
	63	56,535	94.5%
64	61	4	0.0%
	63	894	1.5%
	64	54,830	94.8%
	65	2,117	3.7%
65	65	57,248	100.0%
66	64	3,965	7.1%
	66	52,061	92.9%
67	29	13,393	22.1%
	67	43,935	72.6%
	68	1,498	2.5%
	93	1,687	2.8%
68	67	12,744	20.6%
	68	43,981	71.1%
	91	29	0.0%
	92	5,142	8.3%

Act 43 Assembly Plan	Legislature's Assembly Plan	Total Population	Total Percentage
69	68	4,255	7.4%
	69	49,164	86.1%
	86	2,276	4.0%
	87	1,439	2.5%
70	69	2	0.0%
	70	55,576	95.4%
	71	1,195	2.1%
	96	1,503	2.6%
71	70	2,130	3.7%
	71	55,736	96.3%
72	71	2,516	4.4%
	72	55,153	95.6%
73	73	48,523	82.9%
	74	4,985	8.5%
	75	4,999	8.5%
74	34	3,552	6.0%
	73	856	1.5%
	74	54,602	92.5%
75	28	839	1.4%
	29	3,298	5.6%
	73	197	0.3%
	75	54,417	92.6%
76	47	21	0.0%
	48	7,193	10.0%
	76	59,608	83.2%
	77	4,863	6.8%
77	47	176	0.3%
	77	54,396	86.4%
	78	5,509	8.7%
	79	2,911	4.6%
78	47	8	0.0%
	78	53,995	80.4%
	79	13,128	19.6%
	80	11	0.0%
79	46	3,238	4.6%
	48	74	0.1%
	78	138	0.2%
	79	41,521	59.5%
	80	15,065	21.6%
	81	9,696	13.9%

Act 43 Assembly Plan	Legislature's Assembly Plan	Total Population	Total Percentage
80	43	9,610	14.6%
	45	6,112	9.3%
	78	61	0.1%
	80	44,474	67.6%
	81	5,573	8.5%
81	41	14,959	25.0%
	42	4	0.0%
	50	1,801	3.0%
	51	781	1.3%
	81	42,398	70.7%
82	21	1,045	1.8%
	82	46,230	78.1%
	84	11,921	20.1%
83	15	3,263	5.6%
	62	5,034	8.6%
	82	12,581	21.4%
	83	30,172	51.3%
	84	7,720	13.1%
84	15	19,634	33.0%
	84	39,895	67.0%
85	85	58,654	100.0%
	86	17	0.0%
86	69	1,731	2.9%
	85	382	0.6%
	86	57,415	95.0%
	87	934	1.5%
87	68	840	1.5%
	87	56,211	98.5%
88	2	10,722	17.0%
	88	47,392	75.4%
	90	4,780	7.6%
89	4	2,803	4.7%
	89	57,340	95.3%
90	88	2,412	4.2%
	89	1,988	3.4%
	90	53,512	92.4%

Act 43 Assembly Plan	Legislature's Assembly Plan	Total Population	Total Percentage
91	67	231	0.4%
	68	2	0.0%
	91	59,164	99.6%
92	69	8,450	14.2%
	92	50,884	85.8%
93	30	2,177	3.6%
	67	2,681	4.4%
	68	8,846	14.6%
	91	220	0.4%
	92	3,498	5.8%
	93	43,245	71.3%
94	70	1,711	2.8%
	94	59,594	96.0%
	95	775	1.2%
95	95	58,704	100.0%
96	49	240	0.4%
	50	2,184	3.7%
	70	19	0.0%
	96	55,929	95.8%
97	15	848	1.5%
	97	45,218	79.9%
98	98	10,524	18.6%
	22	12,397	20.2%
	97	144	0.2%
	98	48,866	79.6%
99	83	3	0.0%
	97	12,700	22.0%
	98	16	0.0%
	99	45,061	78.0%

Overall Assembly Core Retention: **4,959,811**
Total Pop: **5,893,718**

Overall Assembly Core Retention %: **84.2%**

Source: T. Bryan Core Retention Analysis

Legislature's Senate District Plan Core Retention
--

Act 43 Senate Plan	Legislature's Senate Plan	Total Population	Total Percentage
1	1	162,048	87.9%
	2	6,202	3.4%
	9	4,185	2.3%
	20	2,131	1.2%
	30	9,738	5.3%
2	1	11	0.0%
	2	169,139	92.1%
	12	1,803	1.0%
	14	7,557	4.1%
	19	3,622	2.0%
	30	1,421	0.8%
3	3	170,693	100.0%
4	4	163,208	100.0%
5	3	7,843	4.4%
	5	154,791	86.4%
	6	16,426	9.2%
6	6	162,069	100.0%
7	7	177,415	99.7%
	28	553	0.3%
8	4	15,211	8.3%
	8	161,467	88.6%
	33	5,570	3.1%
9	1	3,005	1.7%
	9	171,926	97.7%
	20	1,059	0.6%
10	10	159,103	86.6%
	25	9,891	5.4%
	31	14,761	8.0%
11	11	140,387	78.9%
	15	5,908	3.3%
	21	2,105	1.2%
	28	29,431	16.5%
	33	8	0.0%

Act 43 Senate Plan	Legislature's Senate Plan	Total Population	Total Percentage
	2	320	0.2%
12	12	173,164	99.0%
	29	1,463	0.8%
13	13	167,467	92.5%
	20	2,913	1.6%
	33	10,640	5.9%
14	13	10,970	6.3%
	14	155,811	90.0%
	24	4,371	2.5%
	27	2,051	1.2%
15	11	38,354	21.8%
	15	135,205	76.9%
	17	2,171	1.2%
16	15	22,283	11.6%
	16	167,898	87.2%
	26	179	0.1%
	27	2,132	1.1%
17	17	171,652	98.9%
	32	1,880	1.1%
18	18	170,533	97.0%
	20	5,305	3.0%
19	1	3,150	1.7%
	18	6,395	3.5%
	19	174,928	94.8%
20	8	4,688	2.7%
	9	2,716	1.5%
	18	1,884	1.1%
	20	167,282	94.7%
21	21	170,331	95.6%
	22	7,871	4.4%
22	21	898	0.5%
	22	170,221	99.5%
23	10	13,393	7.5%
	23	155,577	86.7%
	29	3,715	2.1%
	31	6,858	3.8%

Act 43 Senate Plan	Legislature's Senate Plan	Total Population	Total Percentage
	23	2	0.0%
24	24	172,306	99.1%
	32	1,503	0.9%
	10	4,137	2.3%
25	12	3,552	2.0%
	25	168,579	95.6%
	16	7,398	3.7%
26	26	178,371	88.4%
	27	16,050	8.0%
	14	14,963	7.7%
	15	15,722	8.0%
27	16	3,312	1.7%
	17	2,582	1.3%
	26	199	0.1%
	27	158,727	81.2%
	5	22,897	12.9%
28	7	1,045	0.6%
	21	5,034	2.8%
	28	148,519	83.7%
	23	2,571	1.5%
29	29	173,613	98.5%
	1	10,722	5.9%
30	2	2,803	1.5%
	30	167,424	92.5%
	10	2,177	1.2%
31	23	20,210	11.3%
	31	157,011	87.5%
	17	2,424	1.4%
32	24	1,730	1.0%
	32	175,002	97.7%
	5	848	0.5%
33	8	12,397	7.1%
	28	3	0.0%
	33	162,529	92.5%

Overall Senate Core Retention: 5,434,396
Total Pop: 5,893,718

Overall Senate Core Retention %: 92.2%

Source: T. Bryan Core Retention Analysis

Legislature's Milwaukee SD 4 (AD 10, 11, 12) & SD 6 (AD 16, 17, 18) Core Retention					
Act 43	Legislature's Plan	Total Population	Total Percentage	Black Population	Black Percentage
AD 10	10	46,146	87.7%	26,743	83.7%
	11	6,482	12.3%	5,208	16.3%
AD 11	10	6,276	11.6%	1,595	4.4%
	11	46,364	85.4%	33,843	93.2%
	12	1,635	3.0%	875	2.4%
AD 12	11	6,719	11.9%	4,747	13.4%
	12	49,586	88.1%	30,683	86.6%
SD 4	4	163,208	100.0%	103,694	100.0%
AD 16	16	53,739	100.0%	32,105	100.0%
AD 17	17	52,204	94.3%	35,415	93.0%
	18	3,139	5.7%	2,654	7.0%
AD 18	16	5,975	11.3%	2,708	8.2%
	17	1,233	2.3%	1,088	3.3%
	18	45,779	86.4%	29,074	88.5%
SD 6	6	162,069	100.0%	103,044	100.0%

AD 10, 11, 12, 16, 17, 18 Black Core Retention: 187,863

AD 10, 11, 12, 16, 17, 18 Black Total Pop: 206,738

SD 4, 6 Black Core Retention %: 100.0%

AD 10, 11, 12, 16, 17, 18 Black Core Retention %: 90.9%

Source: T. Bryan Core Retention Analysis

Legislature's Milwaukee AD 8 & 9 Core Retention
--

Act 43	Legislature's Plan	Total Population	Total Percentage	Hispanic Population	Hispanic Percentage
AD 8	8	53,999	100.0%	38,111	100.0%
	7	27	0.0%	23	0.1%
AD 9	8	5,363	9.4%	3,098	8.9%
	9	51,949	90.6%	31,731	91.0%

AD 8, 9 Hispanic Core Retention: 69,842

AD 8, 9 Total Hispanic Pop: 72,963

AD 8, 9 Hispanic Core Retention %: 95.7%

Source: T. Bryan Core Retention Analysis